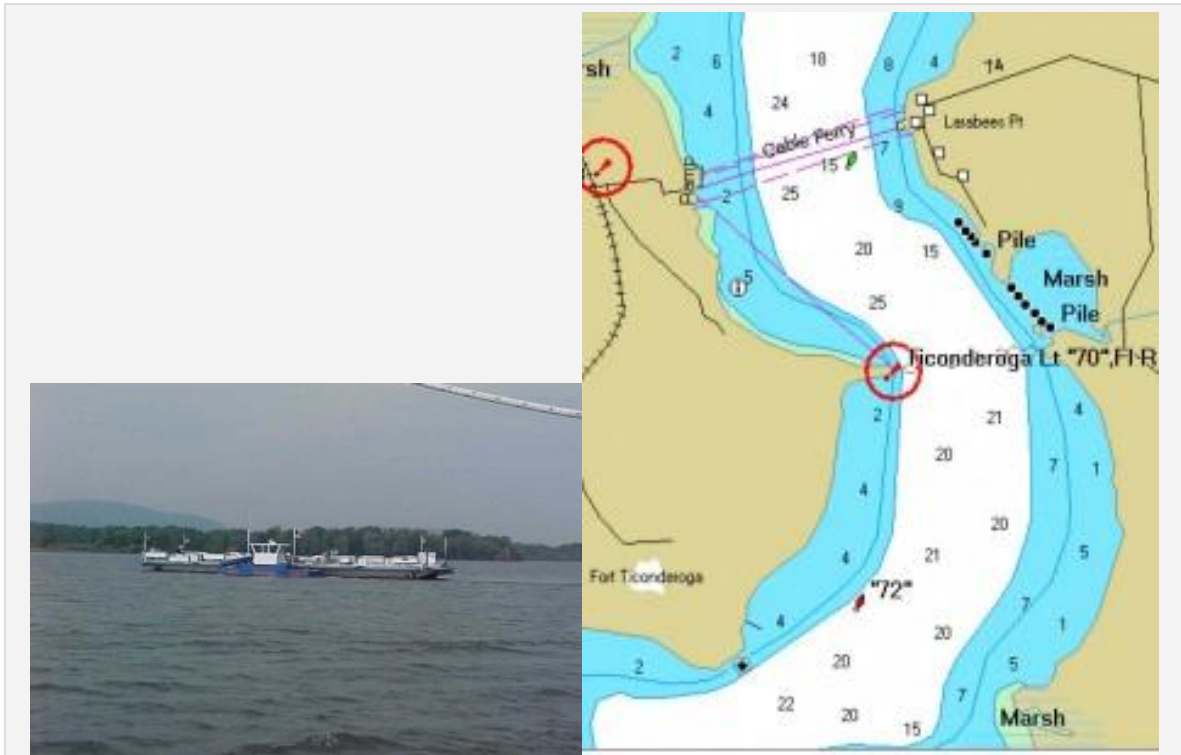


Part 2. Lake Champlain Anchorages – Crown Point to Westport

By: Duane Nealon

Just north of Fort Ticonderoga there is a cable ferry at Larabees Point, which is less than a ½ mile between shores. Just a friendly warning: the ferry operator does not always appear to be sailboat friendly, and will often head out under full throttle when a sailboat approaches, forcing the helms person to yield the right-of-way and come about or otherwise maneuver to avoid shoal waters or collision. So, unless you intend to get an early start before this ferry begins operation, you may want to consider motoring until you pass the ferry and then hoist sails.

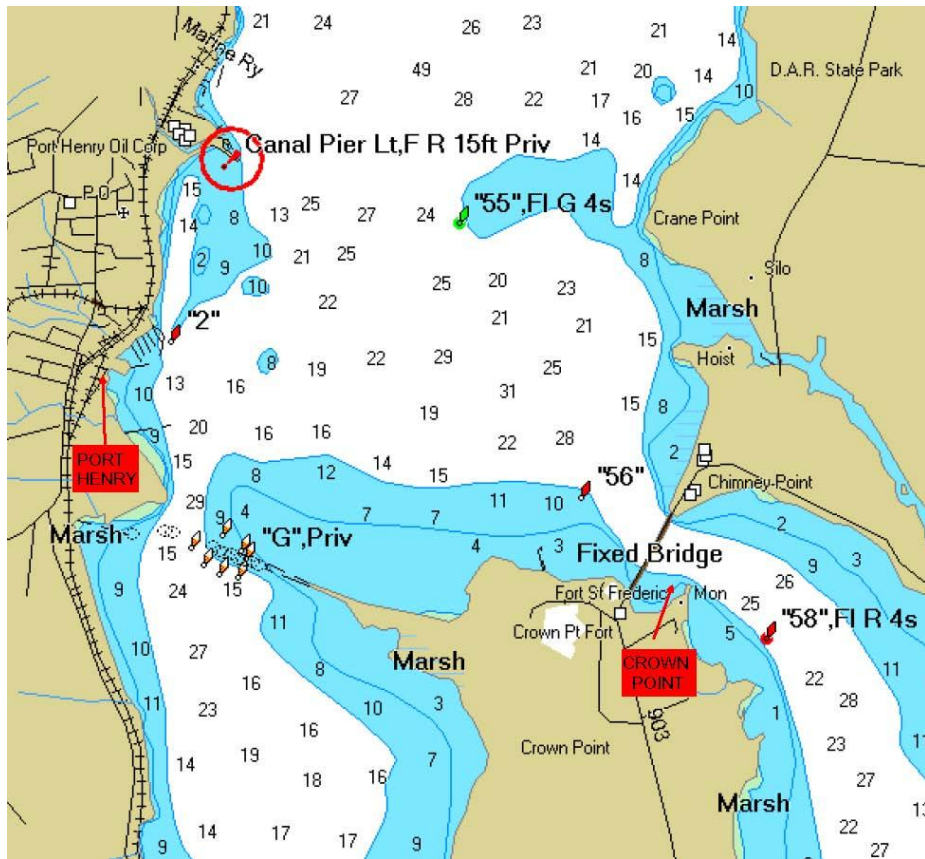


It is approximately 16 miles from Fort Ticonderoga to Crown Point, along a narrow body of Lake Champlain. In general, the majestic Adirondack and Green Mountains predominate the landscape. This pristine beauty is interrupted only once along this section of water by International Paper, a facility with large industrial buildings and smokestacks.

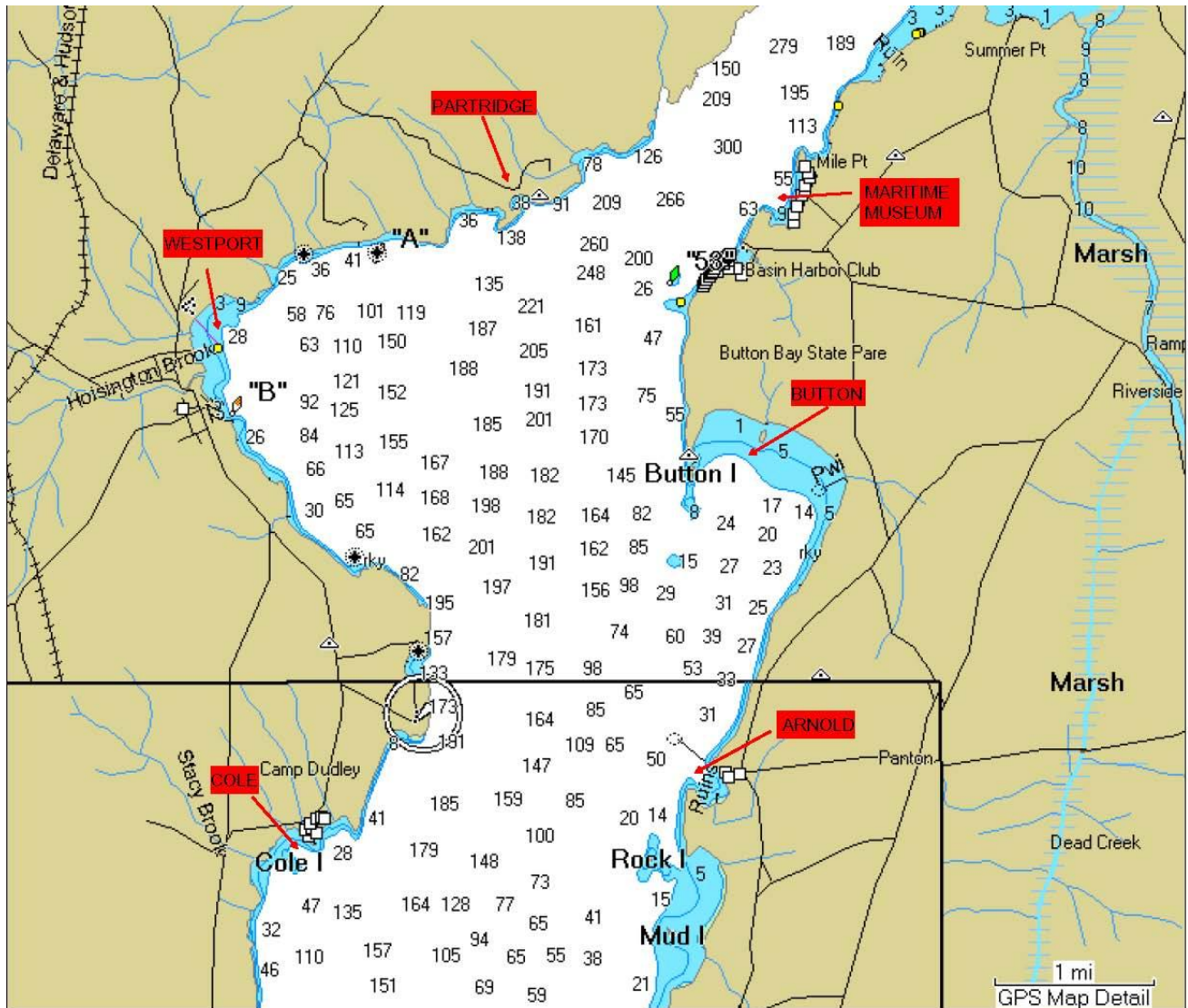


Traveling under sail from Fort Ticonderoga to Port Henry is challenging (especially if beating to windward), but will leave you with a sense of accomplishment, particularly if you are not accustomed to sailing in narrow passages. It is a great feeling when sailing under the Crown Point Bridge into open water. If you are on Lake Champlain for the season, allow the weather and wind direction to determine your short-term sailing plan, leading you from one anchorage to the next.

The [Crown Point Bridge](#) is being replaced with a new design. Although there are several anchorages and marinas in this part of the Lake, including the harbor town of Port Henry, you can still enjoy several more hours of sailing. Often, the lure of open water draws sailors further up the Lake to the Westport anchorages.





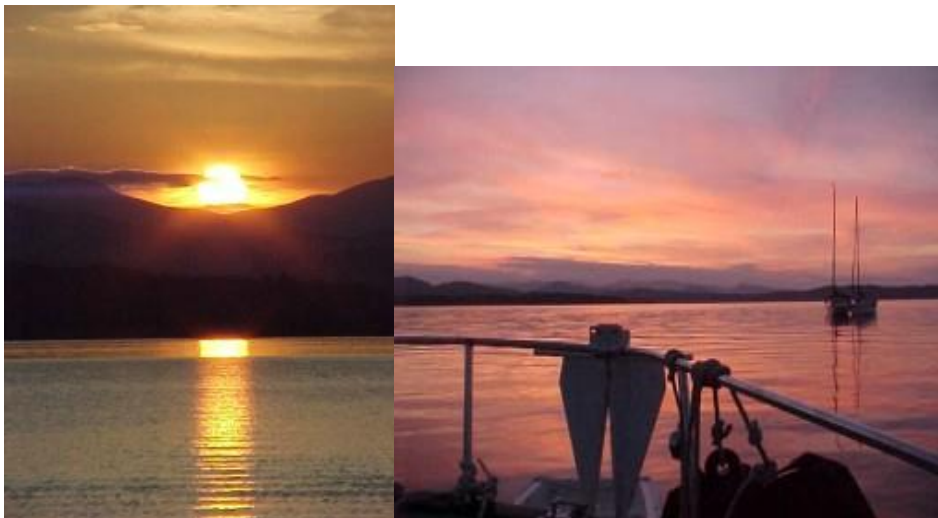


Westport Marina

COLE BAY is a very popular protected north/west wind anchorage, with the added shelter of a small island. You can stretch your legs ashore, and if you have bicycles, [Westport](#) is about 3.5 miles away and offers a full service marina and ship stores. The activities at Camp Dudley, a summer compound for boys, can be either amusing or boisterous, depending on your tastes.



ARNOLD BAY (named after one of many revolutionary exploits of Benedict Arnold in this region) is a small, south wind protected anchorage, presenting close-up views of a water processing facility, but as a consolation, this anchorage consistently delivers gorgeous sunsets.



BUTTON BAY is a protected north/east/west wind anchorage, with the added protection of a small island. This is a [state park](#), with a boat ramp, which means that sometimes you may enjoy the company of jet skis. For those of you traveling with bicycles, [Vergennes](#) is about 7 miles from shore and the [Maritime Museum](#) is 2.5 miles away. Beware of the “**Scotch Bonnett**” rocks off the east shore when rounding Button Bay.



Button Bay State Park, Vermont



Vergennes, Vermont

PARTRIDGE HARBOR is where you go when the hard winds blow. This safe harbor provides protection in any weather, but is small and can only accommodate a limited number of boats, usually riding at stern and bow anchors. No shore access here, trespassing is prohibited. Westport is about 2.5 miles away on the water.



(To be continued in Part 3. Lake Champlain Anchorages- Kingsland to Valcor.)

S/V Gracie Emmett -- Boat Profile

<http://downeasteryachts.com/forums/boat-profiles/de32-gracie-emmett>