

International Twelve Metre Association 2022 North American Championships



**Ida Lewis Yacht Club
Organizing Authority**

**12 Metre Americas Fleet
Host**

SAILING INSTRUCTIONS

**Newport, Rhode Island, USA.
September 15-18, 2022**

1. RULES:

- 1.1** The Regatta will be governed by the rules as defined in the Racing Rules of Sailing (RRS).
- 1.2** The US SAILING Prescriptions to the rules do not apply, except the prescriptions to rule 88, 60.3, 61.4, 67 70.5(a) and 76.1.
- 1.3** ITMA/12 Metre Class By-Laws & Regulations as of July 2, 2008, updated November 11, 2011 and the ITMA/12 Metre Class Rule as of November 1, 2018 and any subsequent amendments.
- 1.4** The Equipment Rules of Sailing shall apply.
- 1.5** The Protest Committee may impose suitable penalties at its own discretion, other than disqualification for violations of the Class Rules, or other non Part I or Part II rules of the RRS.
- 1.6** RRS V2, Post Race Penalties, is in effect.
- 1.7** In the event that a crew member falls overboard and is no longer connected to the yacht, she shall:
 - a) retire from the race
 - b) notify the Race Committee on the fleet VHF channel that she has a man overboard
 - c) her score in this case shall be equal to the number of starters for that race without a hearing. The scoring abbreviation will be MOBThis changes RRS 63.1, A4, A5 and A10.
- 1.8** A boat touching the Race Committee signal boat or the buoys attached to the signal boat at any time will be scored DSQ for that race without a hearing. This changes RRS 63.1 and A5.

2. NOTICE TO COMPETITORS

Notices to competitors will be posted on the Official Notice Board located on the Clubspot website:
<https://theclubspot.com/dashboard/regatta/WOET5HqJhJ/notice-board/race-docs>

3. CHANGES TO SAILING INSTRUCTIONS.

- 3.1.** Changes to the Sailing Instruction will be posted before 0830 on the day it will take effect; except,
- 3.2** Any change to the schedule of races will be posted by 2000 on the day before it will take effect.

4. Signals Made Ashore

- 4.1** Signals made ashore will be displayed from the flagpole at Ida Lewis Yacht Club.
- 4.2** When flag "AP" is displayed ashore, "1 minute" is replaced with "not less than 60 minutes" in race signal "AP".

5. SCHEDULE OF RACES

- 5.1** A maximum of Six (6) Windward-Leeward ("W/L") races are scheduled . No more than two (2) races will be sailed on any one day.
- 5.2** The first warning signal is scheduled for 1100 on Friday and Saturday and 1200 on Sunday.
- 5.3** On Sunday, September 18, no warning signal will be made after 1500 hrs

6. CLASS FLAGS:

Class 1 – Grand Prix & Modern Divisions	Numeral Pennant One
Class 2 – Traditional & Vintage Divisions	Numeral Pennant Two

7. RACING AREA

7.1 Races will be held on the waters of Narragansett Bay or Rhode Island Sound.

7.2 The Rendezvous area will be signaled at 0900 each day from the flagpole at Ida Lewis Yacht Club and announced on VHF Channel 79A.

7.3 Rendezvous Areas:

Area A – southwest of R"2", Brenton Point

Area R – south of Halfway Rock, East Passage, Narragansett Bay.

8. THE COURSES

8.1 Course "W" Windward-Leeward courses- (See Appendix B).

8.2 The number of legs, and the approximate heading of and distance to the first mark will be displayed on a white board on the Race Committee Signal Boat no later than the warning signal.

8.3 For all W/L courses, there will be an offset mark after the original windward mark. No offset mark will be set after a changed windward mark is set. The distance between the weather mark and the offset shall not be counted as a leg.

8.4 Marks, including the windward offset mark, shall be rounded in order and always left to port, except that a gate, when used, shall be rounded as described in Definitions, *Sail the Course*.

8.5 A gate may be set as the Leeward Mark.

8.6 The leeward mark will be approximately 0.1 NM to windward of the starting line.

9. MARKS

9.1 Rounding marks will be orange tetrahedrons. The offset mark shall be an orange sphere.

9.2 A new mark, as provided for in SI 11.1 will be a yellow tetrahedron.

9.3 The starting pin-end mark will be a Green mark.

9.4 The finish pin-end mark will be an Red mark.

10. THE START

10.1 Races will be started in accordance with rule 26.

10.2 The starting line will be between a staff displaying an orange flag on the Race Committee Signal Boat at the starboard end and course side of the port-end starting mark.

10.3 A boat starting later than 5 minutes after her starting signal will be scored Did Not Start without a hearing. This changes rules A4 and A5.

10.4 The Race Committee will hail each premature starter over channel 79A. The number of times an announcement is made, the order in which a particular boat is hailed, or failure to hear an announcement shall not be grounds for redress. This changes rule 62.1 (a).

11. CHANGE OF THE NEXT LEG OF THE COURSE

11.1 In addition to the requirements of rule 33, to change the next leg of the course, the race committee will lay a new mark (or move the finishing line) and remove the original mark as soon as practicable. When, in a subsequent change a new mark is replaced, it will be replaced with an original mark.

11.2 If the weather mark is moved after the first leg of a race, then there will not be an offset set for that or any subsequent leg of the race.

12. THE FINISH

12.1 The finish line will be between a staff displaying a blue flag on the Race Committee Boat and the course side of the pin-end finishing mark.

12.2 The finish line shall be set on the opposite side of the Race Committee Boat from the the starting line unless the Race Committee Boat is moved from the start line location or the race is shortened.

13. PENALTY SYSTEM –

- 13.1** The Scoring Penalty, RRS 44.3 will apply. The penalty will be (1) place.
- 13.2** Boats that have accepted a scoring penalty shall complete a Scoring Penalty Form and present it to the Protest Committee Secretary at the Protest Desk prior to the expiration of the Protest Time Limit on the date the Scoring Penalty was accepted.

14. TIME LIMITS

- 14.1** The time limit for the first boat in division to complete the course in a race is 2.5 hours.
- 14.2** Any boats failing to finish within 30 minutes of the first boat in her starting class to sail the course and finish will be scored TLE without a hearing.
- 14.3** A boat scored TLE shall receive points equal to the number of boats that finished within the 30 minute window for that race plus one. This changes Rules 35.1, A4.1 and A5.

15. PROTESTS AND REQUESTS FOR REDRESS

- 15.1** A boat shall report to and receive acknowledgement from the Race Committee by radio on VHF 79A of its intention to protest and the identity of yacht being protested immediately after the finish of the race in which the incident in question occurred.
- 15.2** Protest forms will be available from the Protest Desk located on the west deck of the Ida Lewis YC and hearing will be held at Ida Lewis YC.
- 15.3** The protest time limit is one (1) hour after the Race Committee Signal Boat docks after the last race of the day. The protest time limit will be posted on the official notice board.
- 15.4** Notices will be posted no later than 20 minutes after the protest time limit to inform competitors of hearing in which they are parties or named as witnesses. Hearings will be held in the regatta protest room at Ida Lewis Yacht Club. Representatives of boats who are parties to a hearing shall remain on call in the vicinity of the protest room. Failure of a boat to appear when called for a hearing will be considered by the Protest Committee as grounds for proceeding under rule 63.3(b).
- 15.5** A list of boats that accepted a scoring penalty will be posted on the Official Notice Board.
- 15.6** Rule 63.5 is changed by adding — "A protest involving contact may be heard by the Protest Committee even though the requirements of rule 61.1(a) and 61.3 have not been fulfilled."
- 15.7** Breaches of SIs 17 and 19 will not be grounds for a protest by a yacht. This changes rule 60.1(a).
- 15.8** On the last day of racing (Sunday, September 18) a request for redress based on a Protest Committee decision shall be delivered no later than 30 minutes after the decision was posted. This changes RRS 62.2

16. SCORING

- 16.1** Entries shall be scored by 12mR Class Division.
- 16.2** The Low Point scoring system of Appendix A will apply.
- 16.3** A boat's series score for the North American Championship shall be the total of all her race scores. This changes rule A2.
- 16.4** One completed race will constitute a regatta.

17. SAFETY REGULATIONS

- 17.1** Check In – prior to the first warning of each day all yachts shall check in with the Race Committee by hailing them on VHF 79A and reporting their number and name until acknowledged.
- 17.2** A yacht that retires shall notify the Race Committee as soon as possible.
- 17.3** In the event that life saving equipment is lost overboard, it should be retrieved. If recovery is impossible, loss of any equipment that floats shall be reported immediately to the Race Committee and to the nearest U.S. Coast Guard station on VHF Channel 16.

- 18. SUPPORT BOATS -** Support boats shall stay outside of a 100 yard radius of any boat that is racing.

19. RADIO COMMUNICATIONS

- 19.1** Except in an emergency, a boat shall neither make radio transmissions while racing nor receive radio communications not available to all boats. This restriction also applies to mobile telephones and any other wireless device.

- 19.2** From one hour prior to the scheduled first warning of the day until a boat has finished racing for the day, it may not receive weather, current, or navigational information except from a publicized source available at no cost to all competitors. Subscription, password protected or restricted access web pages are considered private information and may not be used for the transmission or reception of specialized weather information.
- 19.3** General use of the Internet and publicly available web sites to obtain weather including all National Weather Service data is authorized. Weather data developed specifically for the Race may not be received while racing.
- 19.4** The race committee may utilize VHF Channel 79A for communications with competing boats for race information, change of course, etc. Failure to do so shall not be grounds for seeking redress.

20. PRIZES - As per the Notice of Race

21. NOTES

- 21.1** Competitors are reminded that Narragansett Bay is a restricted channel and sailing vessels do not have right of way over a vessel under power which may be restricted in her ability to maneuver.
- 21.2** In the event there is racing in Narragansett Bay, competitors should be aware of heightened security around the Navy base in Newport just north of the Pell Bridge. The area along the coast of the Naval Facilities from Coasters Harbor to the breakwater at the north end of Coddington Cove marked by a series of white buoys shall rank as an obstruction. Yachts shall not enter this area.
- 21.3** **DISCLAIMER OF LIABILITY** - Competitors participate in the regatta entirely at their own risk. See RRS 4, Decision to Race. The Organizing Authority, the 12 Metre Class, the 12 Metre Yacht Club and any sponsors will not accept any liability for material damage or personal injury or death sustained in conjunction with or prior to, during, or after the regatta Attention is also drawn to ISAF Offshore Special Regulation 1.02, Responsibility of the Person in Charge, as well as the "Waiver and Release of Liability".
- 21.4** **MEDIA RELEASE:** Competitors and crew members on the competing yachts grant, at no cost, to ITMA, the 12 Metre Yacht Club, Ida Lewis Yacht Club, sponsors and affiliated companies the absolute right and permission to use their name, voice, image, likeness, biographical material and representations of the boats in any media World-wide (including but not limited to television, video, print and electronic media), for the purposes of advertising, promoting, reporting and disseminating information

22. OTHER INFORMATION

Race Officials

Principal Race Officer:	Peter Gerard (pgerard53@gmail.com)
Protest Committee Chairman:	Mary Pierce (pierce.maryh@gmail.com)

Ida Lewis Yacht Club
Commodore
Race Committee Chair

Stephen MacGillivray
Guy Sanchez (racecommittee@ilyc.org)

Twelve Metre Class
ITMA VP
Americas Fleet Executive Director

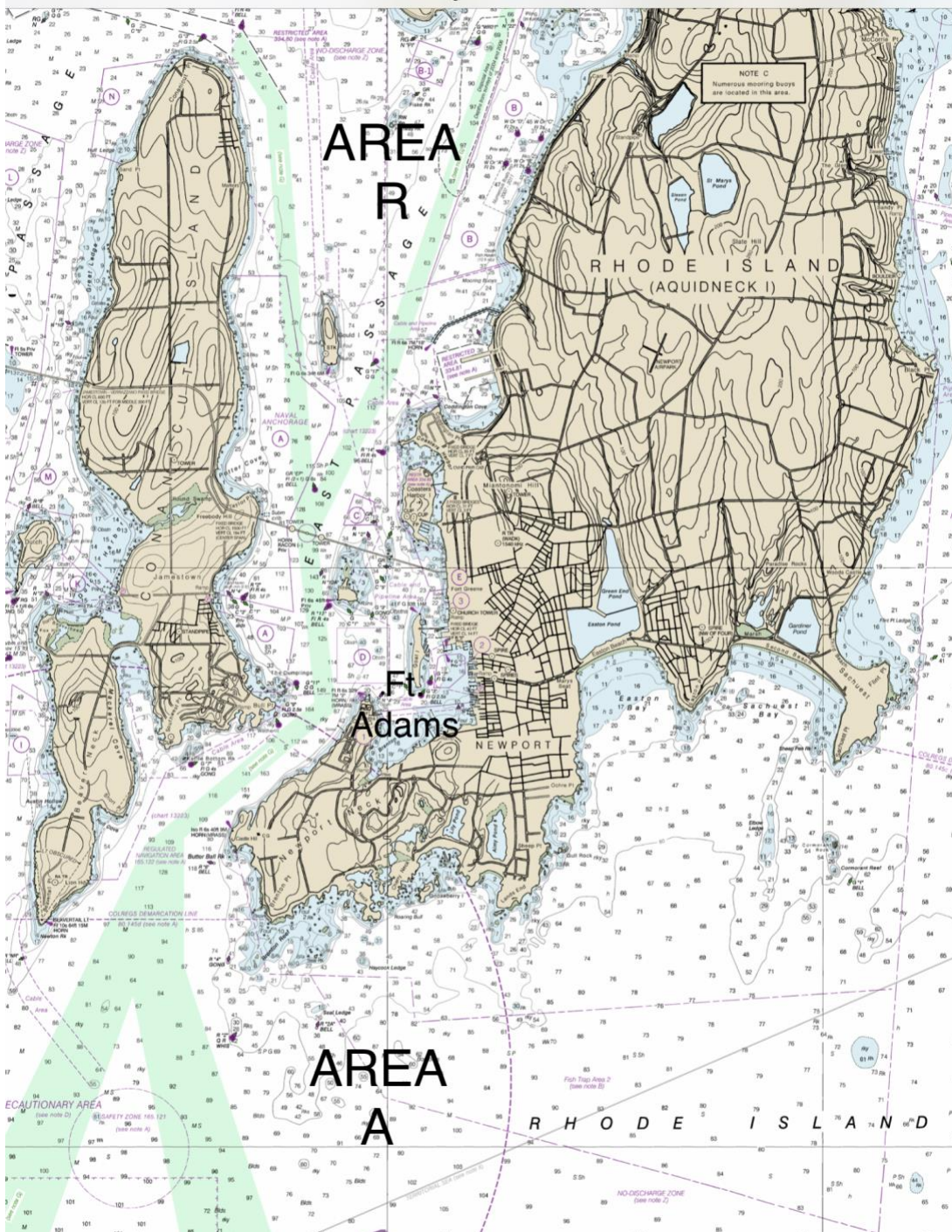
Steve Eddleston
Peggy Hersam (12myachtclub@gmail.com)

Regatta Web Site
Fleet Web Site
Ida Lewis YC Web Site

<https://12myc.org/regatta/W0ET5Hq1hJ>
12myc.org
ilyc.org

APPENDIX A

RENDEZVOUS AREAS



Course "W"

