



WASZP US NATIONAL CHAMPIONSHIP
& AMERICAS CHAMPIONSHIP
KANEOHE YACHT CLUB, HAWAII, USA
23-31 MARCH 2024
SAILING INSTRUCTIONS (SIs)

The notation '[NP]' in a rule of the sailing instructions (SIs) means that a boat may not protest another boat for breaking that rule. The notation '[DP]' means the penalty for a breach of the rule may, at the discretion of the Protest Committee, be less than disqualification. This changes RRS 60.1(a).

1 RULES

- 1.1 Unless stated in the SI, these SIs apply to both the US Nationals and Americas Championship.
- 1.2 The event is governed by the rules as defined in *The Racing Rules of Sailing*
- 1.3 *US Sailing Prescriptions apply.*
- 1.3 Appendix T (Arbitration) will apply.
- 1.4 Appendix P (Special procedures for rule 42) will apply as amended in NOR 14.
- 1.5 Special procedures for Slalom racing will be outlined in Appendix 2.

2 CHANGES TO SAILING INSTRUCTIONS

- 2.1 Any change to the sailing instructions will be posted before 0900 on the day it will take effect, except that any change to the schedule of races will be posted by 2000 on the day before it will take effect.

3 NOTICES TO COMPETITORS

- 3.1 Notices to competitors will be posted on the official notice board located at [WASZP US National & Americas Championships](https://www.waszp.com) [WASZP US National & Americas Championships](https://www.waszp.com) ([kaneoheyachtclub.com](https://www.kaneoheyachtclub.com)) also check <https://racehub.waszp.com/> for information
- 3.2 Unofficial communication with competitors will be through a WhatsApp group chat. <https://chat.whatsapp.com/DftlwQzH6EQ27xiCDcYzr9>

4 CODE OF CONDUCT

- 4.1 [DP] Competitors and support persons shall comply with reasonable requests from race officials.

5 SIGNALS MADE ASHORE

- 5.1 Signals made ashore will be displayed on the flagpole by the swimming pool, or on the flagpole of the Race Committee Boat, (aka Cy Gillette pontoon boat).
- 5.2 When flag AP is displayed ashore, '1 minute' is replaced with 'not less than 30 minutes' in Race Signals AP.

6 SCHEDULE OF RACES

- 6.1 For championship racing, four races are scheduled per day, but may increase or decrease due to weather conditions and forecasts.
- 6.2 A maximum of six championship races may be sailed on any one day.
- 6.3 A competitor briefing will be held two hours prior to the start of the first race of each day.

<i>Date</i>	<i>Time</i>	<i>Regatta</i>	<i>Activity</i>	<i>No. of Races</i>	<i>Social</i>
23 March	09:00AM – 02:00 PM		Registration Measurement & Free Sailing	-0-	Opening Ceremony at 04:00 PM
24 March	12:00 PM	US Nationals	Championship Racing	4	Daily Brief 09:30AM
25 March	12:00 PM	US Nationals	Championship Racing	4	Daily Brief 10:00AM
26 March	12:00 PM	US Nationals	Championship Racing	4	Daily Brief 10:00AM
27 March	TBC	Lay Day	VACATION DAY		
28 March	12:00 PM	Americas	Slalom & Championship Racing	4	Daily Brief 10:00AM
29 March	12:00 PM	Americas	Championship Racing	4	Daily Brief 10:00AM
30 March	10:00 AM	Americas	Championship Racing	4	Daily Brief 08:00AM
31 March	01:00 PM	Americas	Distance Race	TBC	Daily Brief 10:00AM

CLASS FLAGS

- 7.1 The class flag will be a flag with WASZP class insignia.

8 RACING AREA

- 8.1 The primary racing area is in the area to the west of Kaneohe Yacht Club between Moku O’Loo to the west and the Marine Corps air station to North. See Appendix 3,4 and 5 for Charts.

9 COURSES

- 9.1 The diagram in SI Appendix 1 shows the courses, including the order in which marks are to be passed, and the side on which each mark is to be left.
- 9.2 The number of laps to be sailed will be displayed on the committee boat using a number pennant (i.e. The number 1 for one lap, 2 for two laps and 3 for three laps).
- 9.3 The course to be sailed will be displayed on the committee boat.
- 9.4 The course for the distance race will be posted on the ONB prior to the morning briefing on the day of the distance race.

10 MARKS

- 10.1 Gate mark(s) will be yellow or orange inflatable marks.
- 10.2 The pin end mark will be an orange cylinder mark approximately 4 ft. tall and 6 in. diameter.

11 OBSTRUCTIONS

- 11.1 Boats shall not impede the passage of a vessel which can safely navigate only within a narrow channel. Boats identified who endanger their own safety, other sail boats, or that of a commercial or government vessel will be subject to protest by a Race Committee (RC) or contestant and face possible disqualification. RRS 60.3 is modified to add (d) to read: A hearing for allegations of the above will be instigated by a protest committee if notified by government, commercial or individual vessel of possible infraction. It shall also extend the time limit under RRS 61.3 to accept the information.

12 THE START

- 12.1 The starting line is between the staff displaying the orange flag on the signal vessel at the starboard end and the course side of the port end starting mark.
- 12.2 A boat that does not start within five minutes after her starting signal will be scored DNS without a hearing. This changes RRS A5.1 and A5.2.
- 12.3 For Slalom racing only, the starting sequence will be 3,2,1,0. This changes RRS 26. There will be a single horn for each minute, NOT the US Sailing Appendix U.

13 CHANGE OF THE NEXT LEG OF THE COURSE

- 13.1 To change the next leg of the course, the race committee will move the original mark or the finishing line to a new position.
- 13.2 The Race Committee is not required to signal the change where the next leg of the course is changed by less than 10 degrees in angle or less than 100 meters in length. This changes RRS 33.

14 GRAND PRIX FINISH

14.1 Championship Racing

- (a) Unless shortened in accordance with RRS 32.2, the finishing line is between the staff displaying a blue flag on the signal vessel and the course side of mark 2p.
- (b) When the leading boat completes the course and finishes, the Race Committee signal vessel at the finish will immediately display a blue flag with a sound signal. The blue flag will be removed at the end of the finishing window time limit. All boats that
- (i) have completed a lap before the blue flag is displayed, but then fail to finish while it is displayed, or
 - (ii) cross the finishing line while the blue flag is displayed

shall be deemed to have finished irrespective of the number of laps completed. Their score in the race will be based on the order when they either completed their last lap or finished, with those having completed more laps finishing ahead of those with fewer laps. This changes RRS 28.1 and A4.

- (c) When the blue flag is displayed, all boats on a downwind leg shall sail through the finishing line.
- (d) [DP] A boat that crosses the finishing line when the blue flag is displayed shall not attempt a further lap.

14.2 Distance Racing

- (a) The finishing line is between the staff displaying a blue flag on the finish boat and the course side of the pin end.
- (b) Competitors shall pass through the checkpoints, which are between the marks of the course and official vessels, as per the course diagram. Boats that cross the checkpoint line(s) but do not finish will be scored behind all boats that finish and in the order that they cross the checkpoint lines. This changes RRS 28.1 and A4.

14.3 Slalom Racing

Finish line is between the staff displaying a blue flag on the finish vessel and the course side of mark.

14.4 [DP] A boat racing shall return to the starting area when asked by an official vessel. That boat may be scored in its last known position. This changes RRS 28.1, A5.1 and A5.2.

15 **PENALTY SYSTEM**

- 15.1 RRS 44.1 and P2.1 is changed so that the Two-Turns Penalty is replaced by the One-Turn Penalty.
- 15.2 RRS P2.2 and P2.3 do not apply. RRS P2.1 applies to all penalties under Appendix P. RRS P5 does not apply.
- 15.3 To encourage penalties to be taken for infringements, jury members may blow a whistle when they see what they believe to be a breach of a rule.

16 **TIME LIMITS AND TARGET TIMES**

16.1 The Mark 1 Time Limit, Race Time Limit (see RRS 35), and the Finishing Window are shown in the table below.

	Mark 1 Time Limit	Target Time	Race Time Limit (RRS 35)	Finishing Window
Championship	15 minutes	20 minutes	40 minutes	10 minutes
Distance	15 minutes	45 minutes	75 minutes	30 minutes
Slalom	-	5 minutes	-	5 minutes

- 16.2 If no boat has passed the first mark within the Mark 1 Time Limit, the race will be abandoned.
- 16.3 Failure to meet the Target Time will not be grounds for redress.

17 **HEARING REQUESTS**

- 17.1 The protest time limit is 60 minutes after the last boat finishes the last race of the day or the race committee signals no more racing today, whichever is later. The time will be posted on the official notice board.
- 17.2 Hearing request forms are available in the KYC Lobby.
- 17.3 Notices will be posted no later than 30 minutes after the protest time limit to inform competitors of hearings in which they are parties or named as witnesses. Hearings will be held in the protest room, located in the Kaneohe Yacht Club 'Regatta Room' or 'the Upstairs Balcony Room' as indicated on the official notice board.

18 SCORING

- 18.1 The US National Championship and Americas Championship are separate events with separate series.
- 18.2 The score of the distance race and the final rank of the Slalom mini-series will each be the equivalent of one race score respectively.
- 18.3 The Slalom mini-series will have no discards and may be any number of races.
- 18.4 3 races are required to be completed to constitute a series.
- 18.5 The series will be scored as follows:
 - a) When fewer than 4 races have been completed, a boat's series score is the total of her race scores.
 - b) When 4 to 7 races have been completed, a boat's series score is the total of her race scores excluding her worst score.
 - c) When 8 to 11 races have been completed, a boat's series score is the total of her race scores excluding her two worst scores.
 - d) When 12 or more races have been completed, a boat's series score is the total of her race scores excluding her three worst scores.

19 SAFETY REGULATIONS

- 19.1 [DP] A boat that retires from a race shall notify the race committee at the first reasonable opportunity.

20 REPLACEMENT OF CREW OR EQUIPMENT

In accordance with the class rules.

21 EQUIPMENT AND MEASUREMENT CHECKS

- 21.1 [NP] Measurement will take place on 23 March. All boats shall complete measurement before racing.
- 21.2 A boat or equipment may be inspected at any time for compliance with the *rules*.

22 OFFICIAL VESSELS

- 22.1. Judge Flag will indicate judge boats.
- 22.2 RC Flag Race Committee boats (i.e. Weather Mark, RC Start Line etc).

23 SUPPORT VESSELS [DP] [NP]

- 23.1 Support vessels shall register with the organizing authority prior to going afloat.
- 23.2 Support vessels shall stay outside areas where boats are racing from the time of the preparatory signal until all boats have finished or retired or the race committee signals a postponement, general recall, or abandonment.

24 TRASH DISPOSAL

- 24.1 Trash may be placed aboard official or support person vessels.

25 BERTHING

- 25.1 [DP] [NP] Boats shall be kept in their assigned places while in the boat park.

26 PRIZES

- 26.1 Prizes will be given for the following positions. Ages are taken as of 31 December this year:
 - a) Nationals – 1st-5th overall
 - b) Nationals – 1st-3rd junior

- c) Nationals – 1st-3rd youth
- d) Nationals – 1st-3rd apprentice
- e) Nationals – 1st-3rd female
- f) 1st Master
- g) 1st 6.9

- a) Americas – 1st-5th overall
- b) Americas – 1st-3rd junior
- c) Americas – 1st-3rd youth
- d) Americas – 1st-3rd apprentice
- e) Americas – 1st-3rd female
- f) 1st Master
- g) 1st 6.9m

Overall (both events)

- a) 1st-3rd slalom
- b) *Speed Demon*
- c) Influencer
- d) Aloha Spirit

27 RISK STATEMENT

- 27.1 RRS 3 states: ‘The responsibility for a boat’s decision to participate in a race or to continue to race is hers alone.’ By participating in this event each competitor agrees and acknowledges that sailing is a potentially dangerous activity with inherent risks. These risks include strong winds and rough seas, sudden changes in weather, failure of equipment, boat handling errors, poor seamanship by other boats, loss of balance on an unstable platform and fatigue resulting in increased risk of injury. **Inherent in the sport of sailing is the risk of permanent, catastrophic injury or death by drowning, trauma, hypothermia, or other causes.**

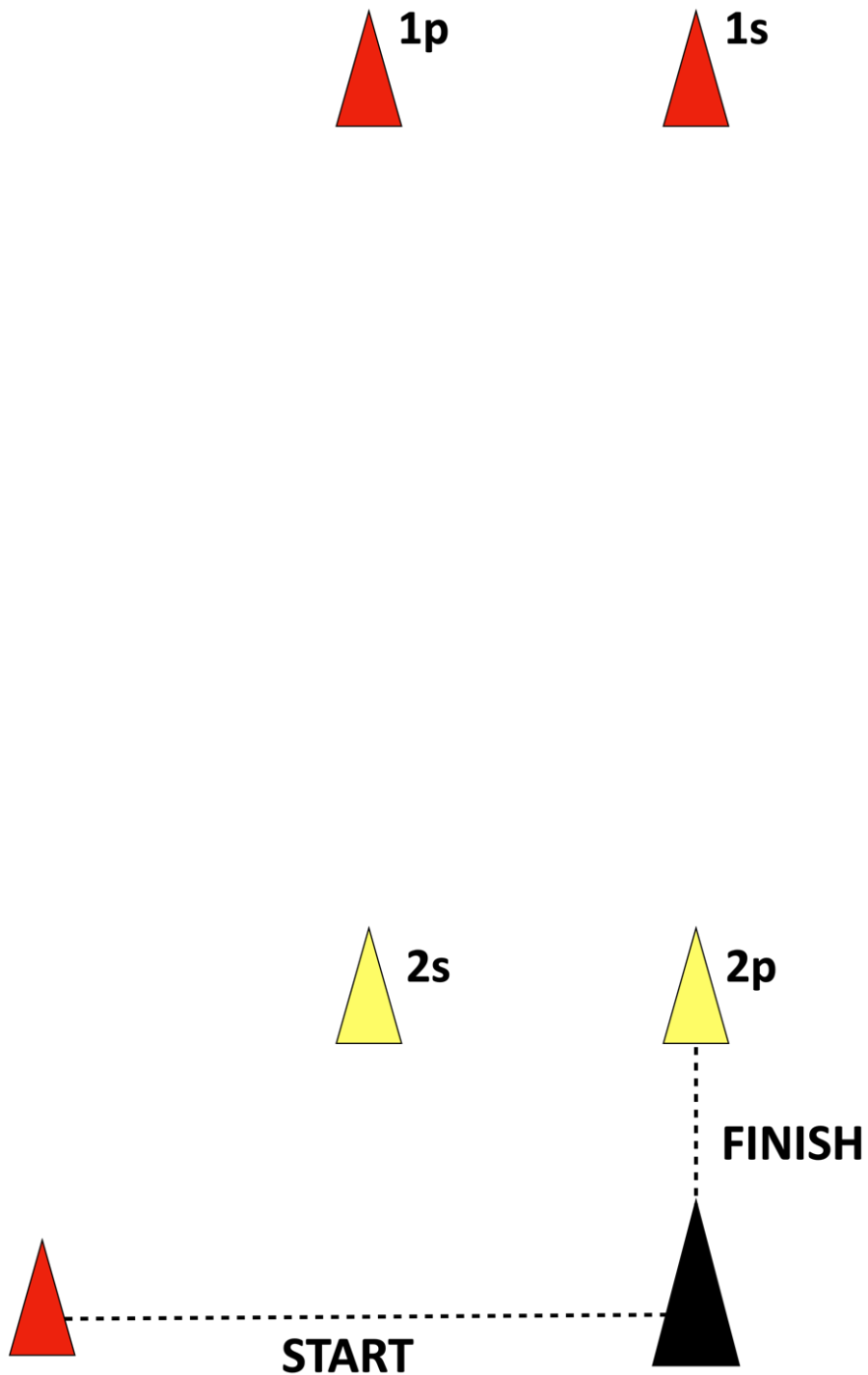
28 INSURANCE

- 28.1 Each participating boat shall be insured with valid third-party liability insurance with a minimum cover of USD\$500k per incident or the equivalent.

29 FURTHER INFORMATION

For further information, please contact the international class on class@waszp.com the North American WASZP rep on tyler@waszp.com or Jesse Andrews at andrewsjesse@gmail.com.

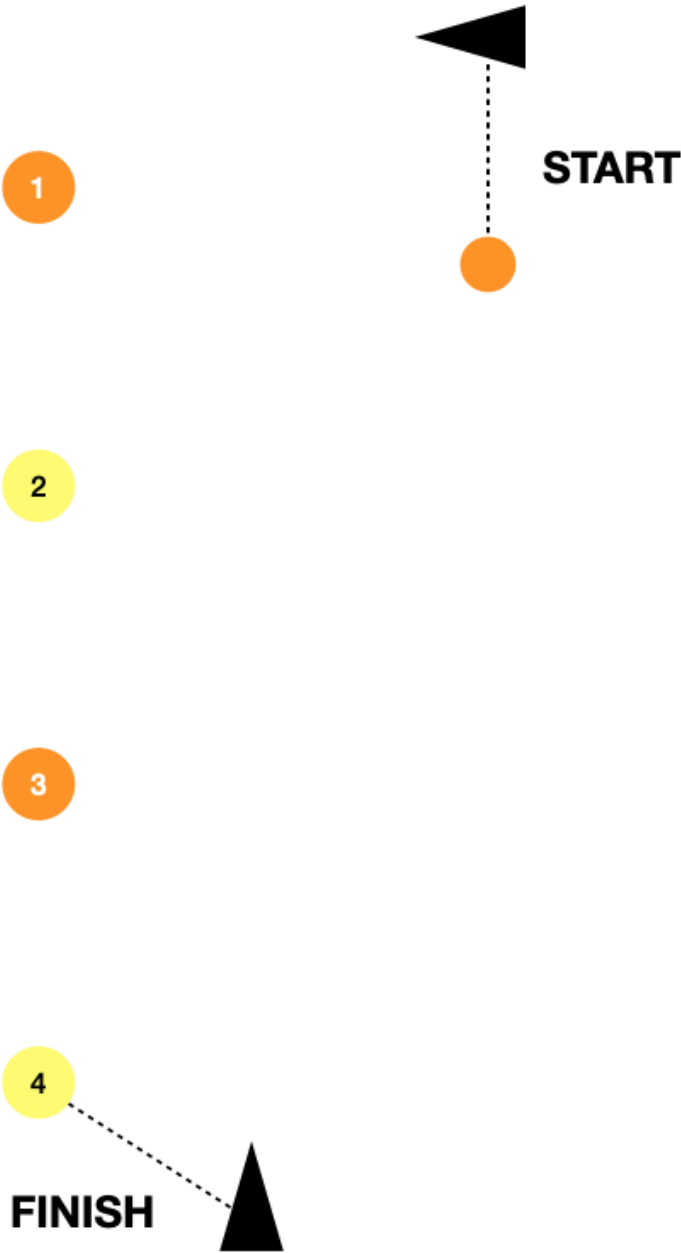
Appendix 1: Championship Courses



3 laps: START; Gate 1p/1s; Gate 2s/2p; Gate 1p/1s; Gate 2s/2p; Gate 1p/1s; 2p/FINISH
2 laps: START; Gate 1p/1s; Gate 2s/2p; Gate 1p/1s; 2p/FINISH
1 lap: START; Gate 1p/1s; 2p/FINISH

Note: Marks in the diagram above that look 'reddish' are 'orange'.

Appendix 2 - Slalom Course



START – 1(p) – 2(s) – 3(p) – 4(s)/Finish

Appendix 2 B - SLALOM RACING

The rules in this Appendix apply to Slalom Racing only.

1 RULES AND UMPIRING PROCEDURE

1.1 The Slalom event will be governed by *The Racing Rules of Sailing* as amended in this section.

1.2 **Penalties:** RRS 44.1 is changed so that the two turns and one turn penalties are replaced by a tack.

1.3 **Protests:** The standard rules for hearings apply to Slalom racing. However, while racing, a boat may protest another boat under a rule of Part 2 (except rule 14) or under rule 31 or 42; however, a boat may only protest under a rule of Part 2 for an incident in which she was involved. **To do so she shall hail 'Protest' and/or conspicuously raise a hand at the first reasonable opportunity.**

1.4A boat that protests as provided in rule 7.3 is not entitled to a hearing. Instead, a boat involved in the incident may acknowledge breaking a rule by voluntarily taking a penalty. An umpire may penalize any boat that broke a rule and was not exonerated unless the boat took a penalty voluntarily. 1.5

Umpire signals and imposed penalties:

An umpire will signal a decision as follows:

- (a) A green and white flag with one long sound means 'No penalty.'
- (b) A red flag with one long sound means 'A penalty is imposed or remains outstanding.' The umpire will hail or signal to identify each such boat.
- (c) A black flag with one long sound means 'A boat is disqualified.' The umpire will hail or signal to identify the boat disqualified.
- (d) A yellow flag with one long sound means 'No penalty, but the protestor may request a hearing'.
- (e) A boat penalized under instruction 1.5(b) shall take her penalty as soon as possible after the incident, or, if the incident takes place before mark 1, as soon as possible after passing mark 1. This changes RRS 44.2.
- (f) A boat disqualified under instruction 7.5(c) shall promptly leave the course area.

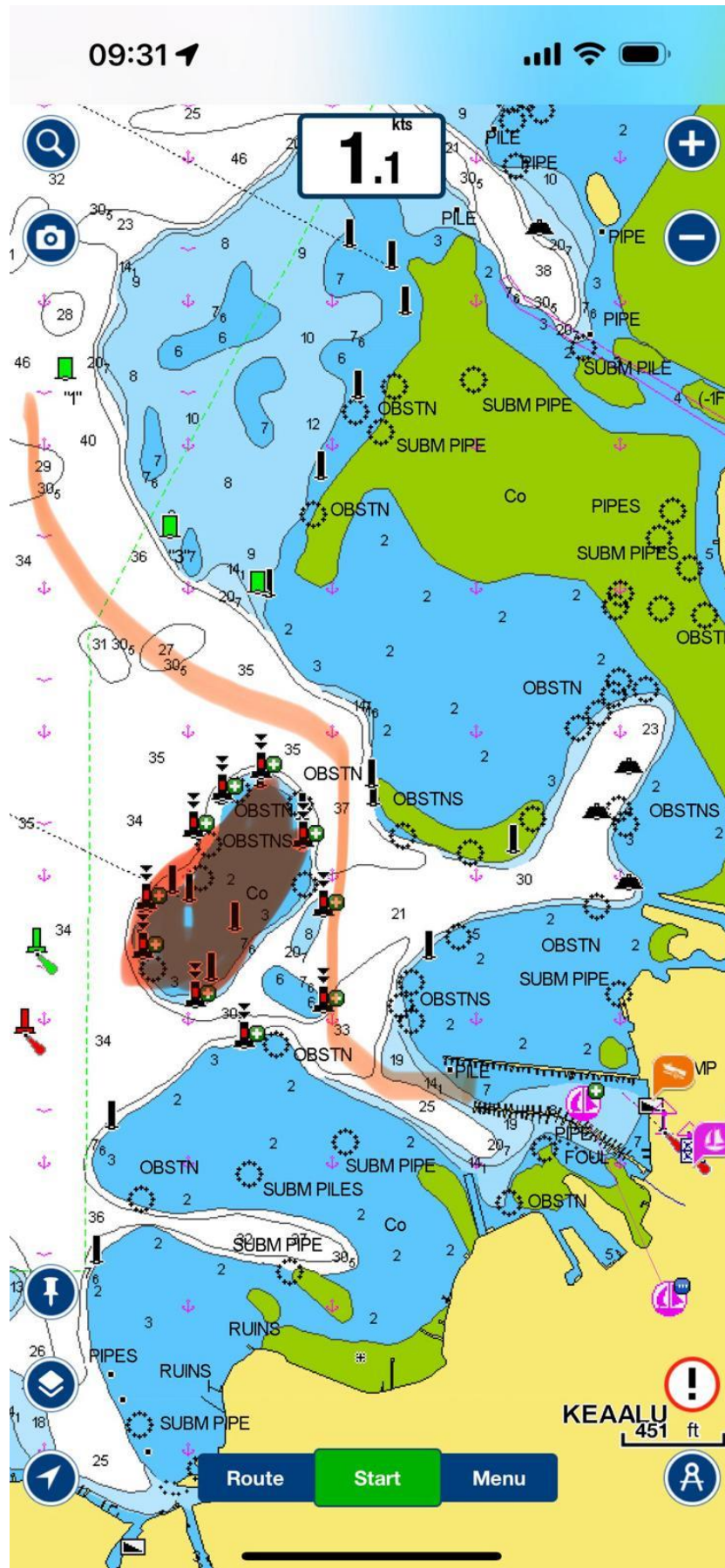
1.6 **Penalties and protests initiated by an umpire:**

When a boat

- (a) breaks rule 31 and does not take a penalty,
- (b) breaks rule 42 and/or class rule C.1 (pumping),
- (c) gains an advantage despite taking a penalty,
- (d) deliberately breaks a rule,
- (e) commits a breach of sportsmanship, or
- (f) fails to take a penalty when required to do so by an umpire,

an umpire may penalize her without a protest by another boat. The umpire may impose one or more penalties, each signaled in accordance with instruction 1.5(b), or disqualify her under instruction 1.5(c), or report the incident to the protest committee for further action. If a boat is penalized under instruction 1.6(f), the original penalty is cancelled.

Appendix 3 – Chart to Access Kaneohe Bay from Kaneohe Yacht Club



Appendix 5 – Marine Corps Base – aka The Kaneohe Bay Naval Defense Sea Area
NOAA Certified Charts & Products may be found at: [U.S. Office of Coast Survey \(noaa.gov\)](https://www.noaa.gov)

The area bounded by the purple T-Dashes, (inside the orange line) at the top of the bay is call the Kaneohe Bay Naval Defense Sea Area and is an Obstruction for the Purpose of this Championship. It is considered a no enter zone by the Navy. **Boats may be stopped, boarded and asked for identification and safety equipment.** This includes sailboats, powerboats and paddle craft.

Additionally this chart shows a reasonable accurate location of reefs. Water depth changes quickly in a very short distance. Skippers should pay close attention to where they are on the bay at all times. Contact with the reef can be very unforgiving.

