

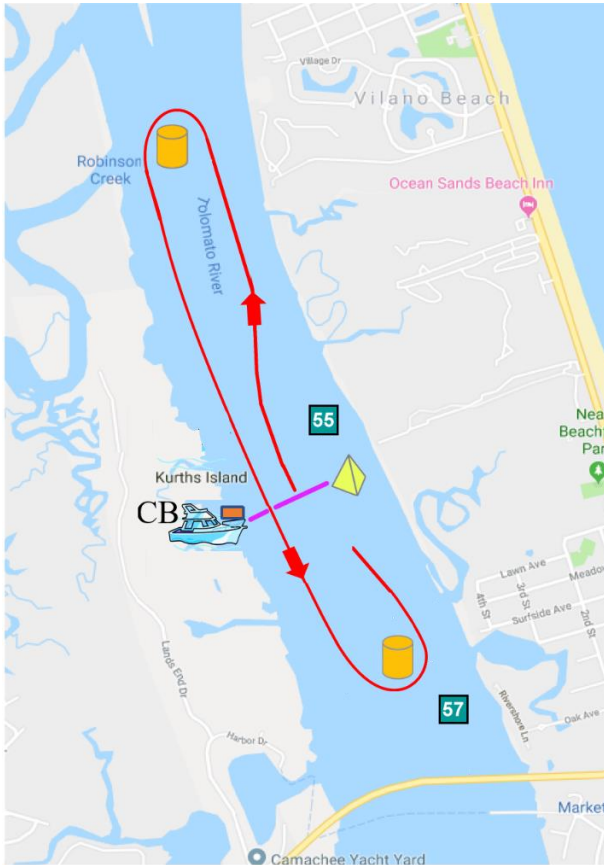


# St. Augustine Yacht Club

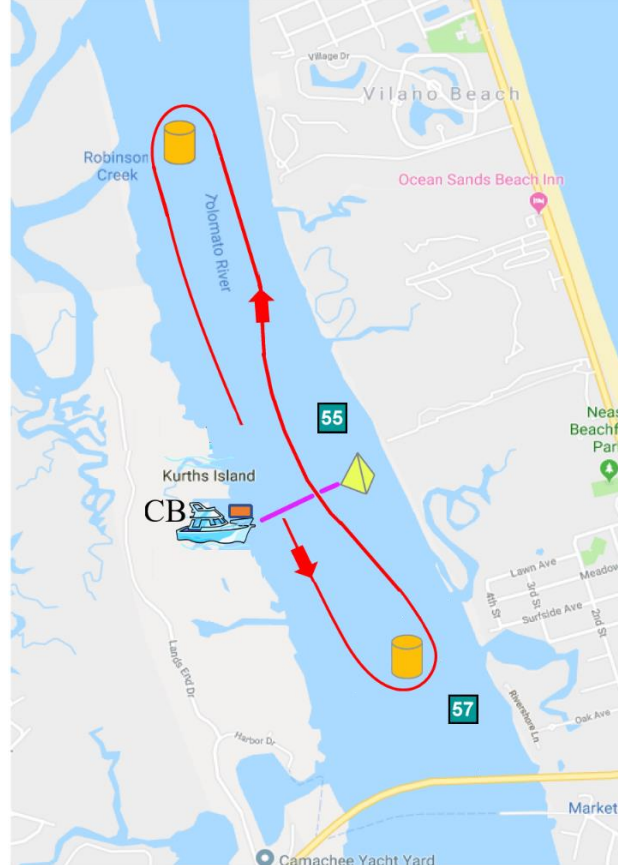
## Standard ICW Racecourses

Sailing Instructions – Appendix A – V2

Course – Northerly Start



Course – Southerly Start



Unless otherwise specified in NORs or Sailing Instructions, Inshore Saint Augustine Yacht Club events will use the following course diagrams.

1. The start/finish line will be between the Orange Flag on the Committee Boat (CB) and a yellow tetrahedron - Mark C.
2. Boats will start heading either north or south.
3. Marks A and Mark B will be orange cylinders.
4. The race committee will specify the direction of start and the number of laps to be sailed.
5. Boats may not pass west of the Committee Boat CB, or east of the yellow Mark C while racing. In other words, the start/finish line must be crossed each time it is passed. Therefore, the committee boat and Mark C are marks of the course, as such RRS 18 applies. They should not be considered obstructions.
6. Marks A and B shall be rounded to port.
7. The race committee may shorten course for one or more classes according to RRS 32.2.
8. Marks A, B, and C may be substituted for any suitable mark or a government mark.

As an example, the race committee might make the following radio announcement: “Today’s race will be south start with one lap”. This should be interpreted and sailed as follows: (i) Start between the CB and yellow Mark C heading south (ii) round orange Mark A to port (iii) head south, leaving yellow Mark C to starboard and CB to port (iv) round the orange Mark B to port (v) head north, finish with CB to starboard and yellow Mark C to port.