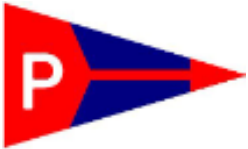


2026 Start Clinic and Midsummer Race

Hosted By: Pontchartrain Yacht Club

July 11 and 12, 2026



Start Clinic Saturday, July 11, 2026

1. A Start Clinic will be held on Saturday, July 11, 2026, at the Pontchartrain Yacht Club. All sailors and boats are invited to participate. There is no fee to participate.
2. Registration: All skippers shall register either online at <https://pontyc.org/regatta/> or in person at the Skipper's Meeting.
3. A Skipper's Meeting shall be held at the PontYC Bar at 2:00pm. The meeting will include a basic discussion of the start process, and the planned clinic on-water operations.
4. Following the Skipper's Meeting, participating boats shall proceed to the designated start area for a series of start sequences. The intent is to accomplish between three and five complete start sequences for practice. Start sequences will be videorecorded, both from the committee boat and an airborne drone. These recordings shall be presented after the series of start sequences at the PontYC Bar or the Regatta Room after the Clinic for review and commentary.

Sailing Instructions

PontYC Midsummer Race, Sunday, July 12, 2026

1. RULES

- a. The race will be governed by the Racing Rules of Sailing (RRS) and the ORR-EZ Racing Rule.

- b. Sailing Instructions that alter the Racing Rules of Sailing.

Sailing Instruction No	Rule Altered Herein
4.b	RRS "Race Signals"
9.c	RRS A4 and A5
12.c	RRS 35, A4 and A5
12.d	RRS 61.2
13.d	RRS 60.1
14.b and 14.d	RRS A2

2. NOTICE TO COMPETITORS

Notices to competitors will be posted on the official notice board located in the clubhouse on the glass case near the bar.

3. CHANGES TO SAILING INSTRUCTIONS

- a. Changes to sailing instructions will be posted two (2) hours before the first warning signal on the day it will take effect with the exception of a change to the schedule of races. Schedule changes will be posed by 7:00 pm the day before it will take effect and at the event page on Club Spot <https://pontyc.org/regatta/>.
- b. Questions regarding the sailing instructions shall be submitted to the PRO in writing. Responses will be posted on the official Notice Board.

4. SIGNALS MADE ASHORE

- a. Signals made ashore will be displayed from the flagpole located at the south end of the Pontchartrain Yacht Club lawn.
- b. When postponement is signaled ashore, the warning signal will be made not less than 60 minutes after flag AP is lowered. This alters RRS "Race Signals".

5. SCHEDULE OF RACES

The schedule will be as follows weather permitting

Sunday, July 12, 2026	Skippers Meeting	2:30pm at PontYC
	First Warning Signal	4:00pm
	Awards	ASAP after racing

Race Time Limit (RTL) is 4 hours 30 minutes. Boats not completing the course within the RTL will be scored Did Not Finish (DNF).

CLASS FLAGS

- a. Classes will start using the class flags indicated below.

Class	Class Flag
Spinnaker A	White
Spinnaker B	Green
Non-Spinnaker A	Light Blue
Non-Spinnaker B	Purple

- b. Division may or may not be divided into classes based upon participation prior to each Saturday's skipper meeting. Those breaks will be posted after the skippers meeting.

6. RACING AREA

Racing area will be Lake Pontchartrain, south Pontchartrain Yacht Club and the Bayou Castine harbor entrance.

7. COURSES

Courses for spinnaker and non-spinnaker classes will be identical. The course will be announced at the skipper's meeting and shall be a combination of legs between M1, L1 and PontYC J marks. See Appendix A.

Direction, sequence, rounding instructions and any other course descriptors will be announced at the skipper's meeting and posted on the PontYC bulletin Board.

After start, changes to course will be announced to the fleet on VHF Channel 68 or the channel announced at the skipper's meeting. Racing boats shall acknowledge the change in course, if issued.

8. MARKS

- a. Marks M1 and L1 are permanent structures.
- b. PontYC J is a moored yellow colored vertical cylinder.

9. START

- a. The Start line will be between a staff displaying an orange flag on the RC signal boat and the course side of the starting mark.
- b. Boats whose warning signal has not been made shall avoid the starting area staying clear of other fleets.
- c. The race committee intends to recall OCS boats by hailing sail numbers or boat names after the starting signal. The failure of any boat to hear the hail, an untimely hail of OCS boats, failure to hail any boats, and the order of the boats in the hail shall not be grounds for granting redress. This changes RRS 61.1(a). The race committee will use the VHF radio and/or a loud hailer to hail. The race committee will operate on and monitor VHF Channel 72 with Channel 69 as an alternative.
- d. Boats starting later than ten (10) minutes after her starting signal will be scored Did Not Start without a hearing. This changes RRS A4 and A5.

10. FINISH

The finishing line will be between a staff displaying a blue flag on a race committee boat and the course side of the finish mark.

11. TIME LIMITS

The time limit for the race will be four and one half (4.5) hours.

12. PROTESTS

- a. Competitors shall notify the finishing vessel of their intent to protest upon finishing, or as soon as possible after retiring.
- b. Protests shall be delivered to a member of the Race Committee within sixty (60) minutes after the race committee boat docks.
- c. Notices of protest hearings will be posted on the official notice board within fifteen (15) minutes of the end of protest time.
- d. Breaches of SIs 9.b and 15 will not be grounds for protest by a boat. This changes RRS 60.1.

13. RATING SYSTEM

- a. Time on distance (TOD) ORR-EZ Benchmark PHRF ratings will be used.
- b. Course configuration and course length will be declared before the race at the Skipper's Meeting, and are not subject to protest. This changes RRS 60.1.

14. SCORING

- a. The Low Point System scoring will be used per RRS Appendix A.
- b. One (1) completed race will constitute a series for the Spring Regatta.
- c. All boats will be handicapped using the appropriate current GYA ORR-EZ Benchmark PHRF for their declared division, or, if the boat does not have a current GYA ORR-EZ Benchmark PHRF, the rating assigned by the Race Committee. Assigned ratings shall not be subject to protest.

15. SAFETY

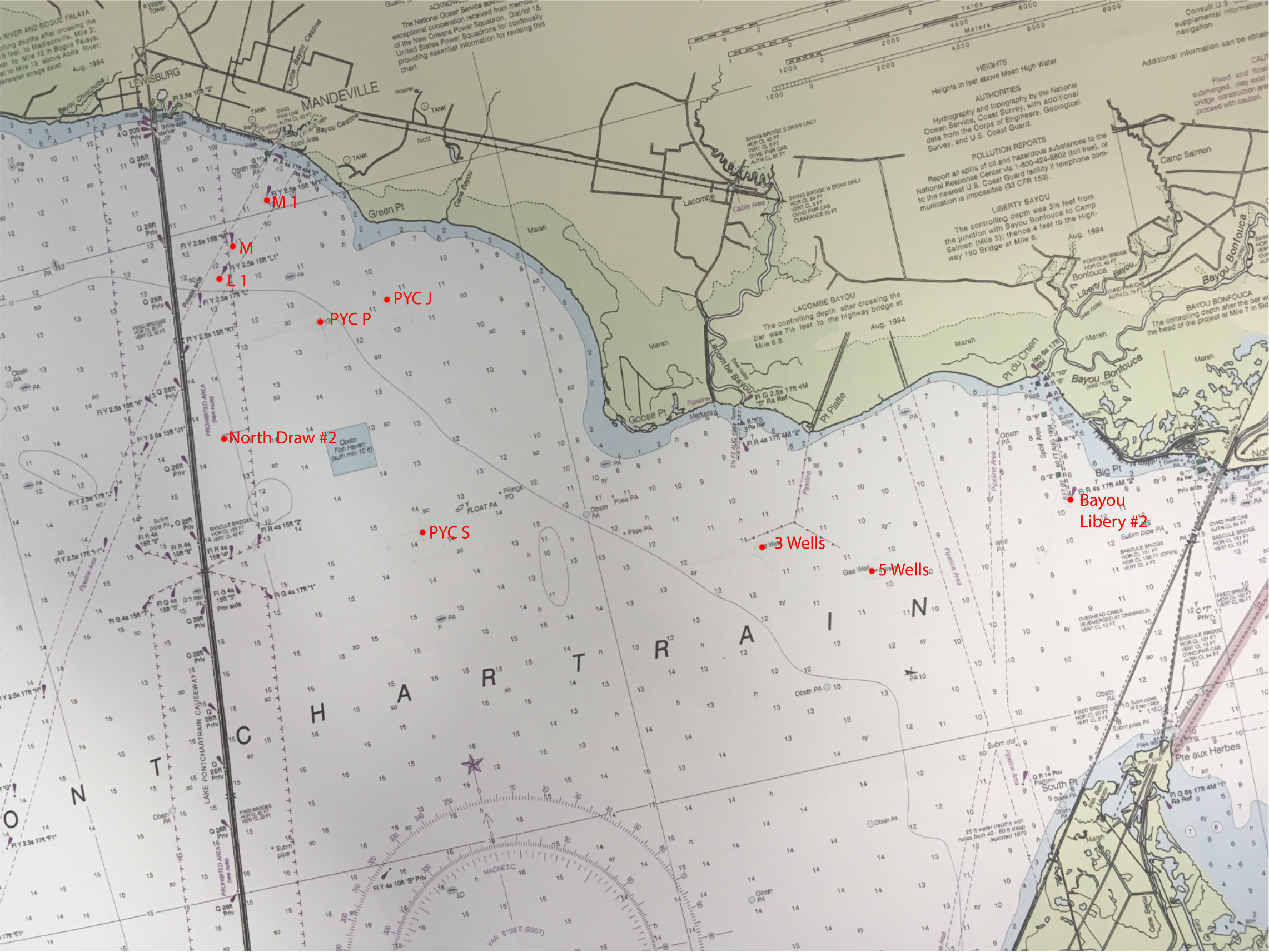
- a. All boats shall be in compliance with the United States Coast Guard and Louisiana Department of Wildlife and Fisheries required safety equipment.
- b. All boats must have a functional VHF radio capable of communication on VHF Channels 16, 68 and 72.
- c. Prior to the first warning signal of each day, all boats shall check in by sailing past the stern of the race committee signal boat on starboard tack and hail the boat name and sail number and shall be acknowledged by the Race Committee.
- d. A boat that retires from a race shall notify a race committee vessel before leaving the course, or when that is impossible, the Pontchartrain Yacht Club office immediately after arrival ashore.
- e. The Pontchartrain Yacht Club encourages all personnel aboard vessels underway to wear appropriate Personal Flotation Devices (PFDs) and to avoid intoxication.

16. PRIZES

- a. First, Second and Third Place awards in each division will be given for the overall Spring Regatta.

Appendix A

- ***Chart of Marks***
- ***Course/Distance between Marks***
- ***Mark Positions***



M 1

M

L 1

PYC J

PYC P

North Draw #2

PYC S

3 Wells

5 Wells

Bayou Libery #2

Libery #2

ACKNOWLEDGMENT
The National Ocean Service acknowledges exceptional cooperation received from members of the New Orleans Power Squadron for continually providing essential information for revising this chart.

HEIGHTS
Heights in feet above Mean High Water.

AUTHORITIES
Hydrography and topography by the National Ocean Service, Coast Survey, with additional data from the Corps of Engineers, Geological Survey, and U.S. Coast Guard.

POLLUTION REPORTS
Report all spills of oil and hazardous substances to the National Response Center via 1-800-424-8802 (toll free), or to the nearest U.S. Coast Guard facility if telephone communication is impossible (33 CFR 153).

LIBERTY BAYOU
The controlling depth was 3 1/2 feet from the junction with Bayou Bonfouca to Camp Salmen (Mile 5); thence 4 feet to the Highway 190 Bridge at Mile 6.

LACOMBE BAYOU
The controlling depth after crossing the bar was 7 1/2 feet to the highway bridge at Mile 6.8.

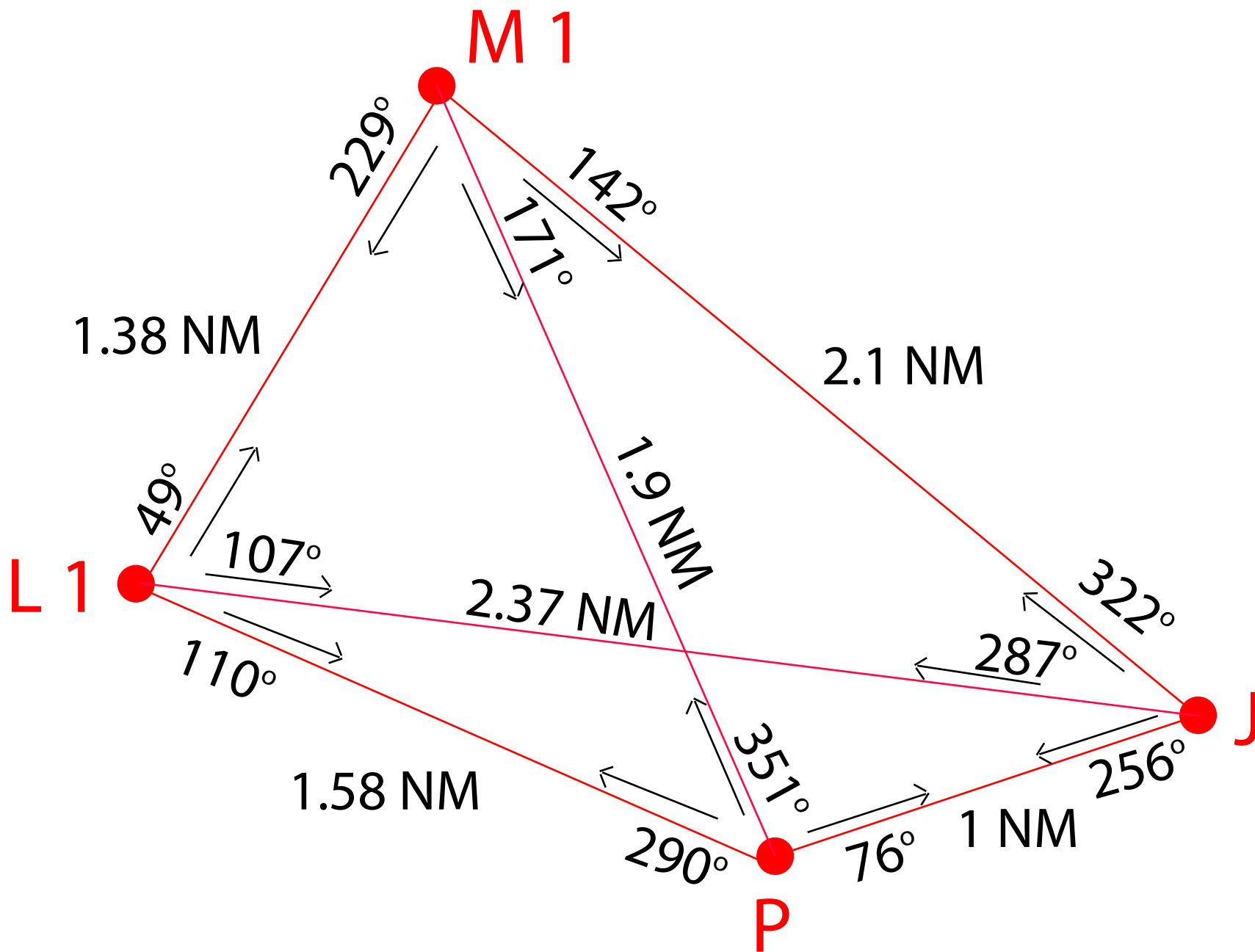
Additional information can be obtained from the U.S. Coast Guard. Consult U.S. Coast Guard for supplemental information for navigation.

CAUTION
Fixed and floating aids to navigation may be submerged, and bridge construction may proceed with caution.

Obstn Fish Haven (authn min 10 ft)

25 ft water depths with holes from 40 - 80 ft deep reported 1979

MAGNETIC
VAR 0°30'E (2007)



Mark	Latitude	Longitude	Description
M1	30 20.104	090 04.004	Fixed Pipeline Marker
M	30 19.617	090 04.863	Fixed Pipeline Marker
L (Missing)	30 18.881	090 05.689	Fixed Pipeline Marker
L1	30 19.159	090 05.172	Fixed Pipeline Marker
Bayou Liberty #2	30 13.104	089 51.979	Fixed Channel Marker
PYC J	30 18.432	090 02.566	Floating Yellow Cylindrical Mark
PYC P	30 18.203	090 03.712	Floating Yellow Cylindrical Mark
PYC S	30 15.103	090 02.900	Floating Yellow Cylindrical Mark
North Draw #2	30 15.200	090 05.750	Floating Yellow Cylindrical Mark
3 Wells	30 13.400	089 57.200	Marked as "3 Wells"
5 Wells	30 12.700	089 55.400	Marked as "Gas Wells 5 Wells"
A	30 01.591	090 06.127	Floating Cylindrical Mark

Bearings and Distances

From \ To	M1		M		L		PYC J		PYC P		PYC S		N Draw 2		L1	
	Bearing	Miles	Bearing	Miles	Bearing	Miles	Bearing	Miles	Bearing	Miles	Bearing	Miles	Bearing	Miles	Bearing	Miles
M1			235	0.90	229	1.90	142	2.10	171	1.90	168	5.10	196	5.15	225	1.38
M	055	09.0			223	1.05	119	2.30	144	1.75	158	4.85	188	4.50	209	0.53
L	049	1.90	043	1.05			098	2.75	110	1.85	146	4.50	179	3.70	057	0.53
PYC J	322	2.10	299	2.30	278	2.75			256	1.00	184	3.35	219	4.25	287	2.37
PYC P	351	1.90	324	1.75	290	1.85	076	1.00			166	3.20	209	3.50	306	1.58
PYC S	348	5.10	338	4.85	326	4.50	004	3.35	346	3.20			271	2.50	333	4.51
N Draw 2	016	5.15	008	4.50	359	3.70	039	4.25	029	3.50	091	2.50			006	4.00
L1	045	1.38	029	0.53	237	0.53	107	2.37	126	1.58	153	4.51	186	4.00		