



Notice of Race and
Event Sailing Instructions

Sail Salem Pursuit Race

September 6, 2021



Proceeds benefit the Sail Salem Organization

- 1 **Event:** The Sail Salem Pursuit Race will be a pursuit type race in which the slower boats start before the faster boats with each boat starting at an assigned time, depending of their PHRF handicap. The Organizing Authority is the Boston Yacht Club (BYC). ***This race is a qualifier for the MBSA Pursuit Series.***

There will be two Divisions, Spinnaker and Non-Spinnaker (JAM).
- 2.1 **Eligibility:** Open to PHRF boats with valid PHRFNE handicap certificates. If you don't have a valid PHRF-NE certificate, we'll assign you a rating. Indicate if racing in the spinnaker or non-spinnaker division and provide information on boat design and type, largest headsail (in percentage of "J"), if an inboard, type of propeller (fixed, folding or feathering) and, if in the Spinnaker Division, the largest spinnaker (in percent of "J"). Provide as much of this information as you can so we can give you an accurate rating.
- 2.2 **Registration:** Entry and payment at <https://theclubspot.com/register/regatta/fvOAAMshoJ/class>. Entries should be submitted before 2330 hrs on September 5, 2021. For information contact BYCrace@bostonyc.org.
- 2.3 **Fees:** The entry fee for all boats is a minimum donation of \$75. Contributions above this amount may be made upon entry.
- 2.4 **Handicap System:** PHRF Time on Distance will be used.
- 3 **Rules:** This Event will be governed by the Mass Bay Sailing Association (MBSA) General Sailing Instructions except as changed by these Event Sailing Instructions, as well as any and all COVID-19 related standards, guidelines, and rules required by state and local law. Children under 12 years of age must wear PFD's at all times.
- 4 **Notices to Competitors:** Will be posted on (i) the official notice board located online at <https://theclubspot.com/regatta/fvOAAMshoJ> (ii) by email to addresses supplied at registration.
- 5 **Signals Made Ashore:** Will be displayed from the BYC flagstaff.
- 6 **Schedule of Races:** There will be one race.
- 7.1 **Start Times:** Shall be assigned upon registration. A blue flag will be raised with one sound signal 5 minutes before the start time of the first boat. The RC will attempt to do a countdown for each boat's start to be broadcast on VHF channel 72, but each boat will be responsible for knowing their start time and keeping track of it.
- 7.2 **Warning Signal:** The first warning signal will be no earlier than 1200 hrs.
- 8 **Racing Area:** Will be between the mouth of Marblehead Harbor and Children's Island.
- 9 **The Course:** The course length will be either 4.9 or 6.7 miles. Course details and Mark information are provided in the Addendum to these Sailing Instructions attached.
- 10 **Recalls and Communication:** The Race Committee will use VHF channel 72.
- 11 **Time Limit:** The time limit will be 1500 hrs.
- 12 **Scoring:** Boats will be scored in their finishing order in their respective division.
- 13 **Prizes:** Trophies will be presented for the first through third places in each division.

Social Activities: Prizes will be awarded at the BYC after the race. The Gazebo, Yardarm and one of the Club Lounges will be open after the race, offering BYC's hospitality to all Captains, their crew, and guests. BYC's acclaimed chowder and hotdogs will be served to all skippers and crew.

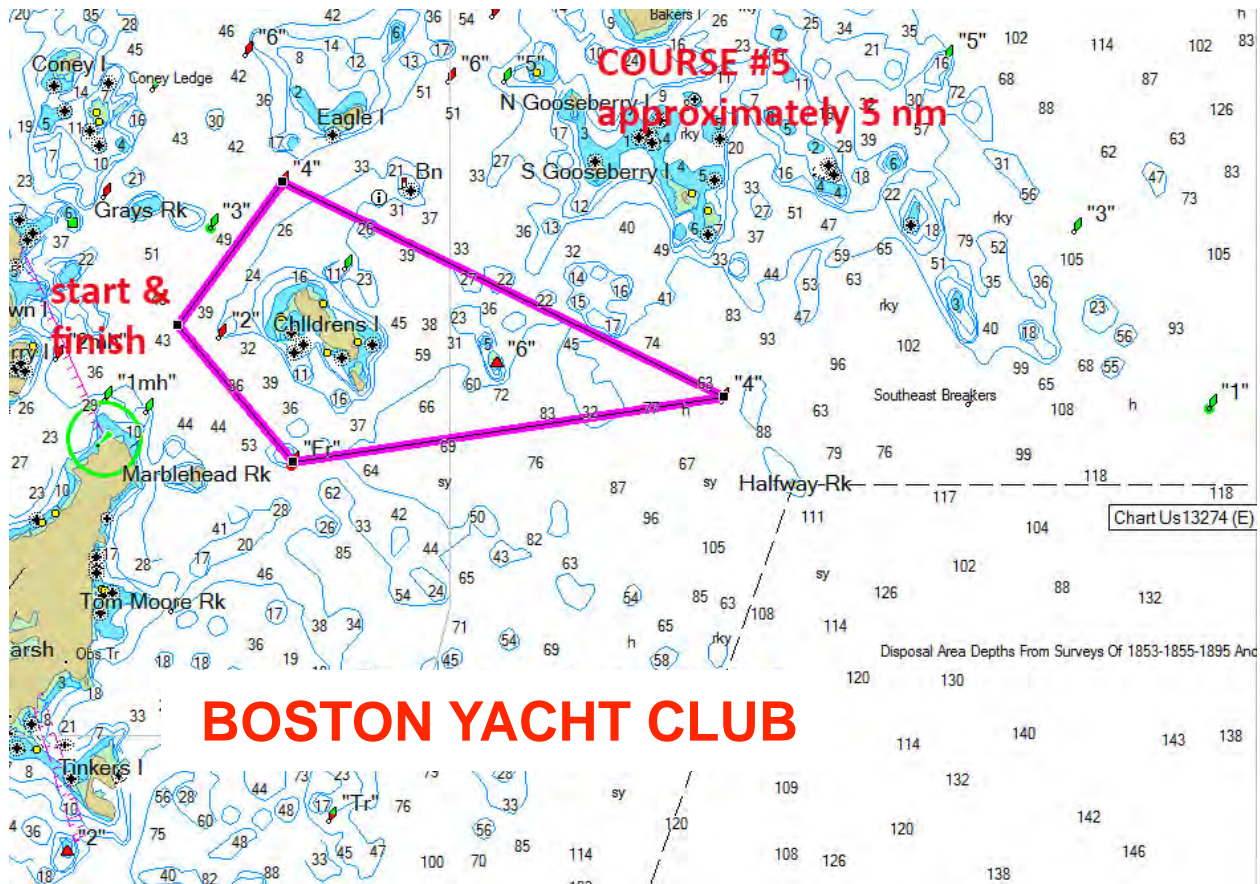
Addendum to Sailing Instructions

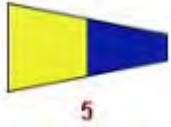
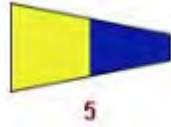


There are 2 possible courses to be used in the BYC Sail Salem Pursuit Race.

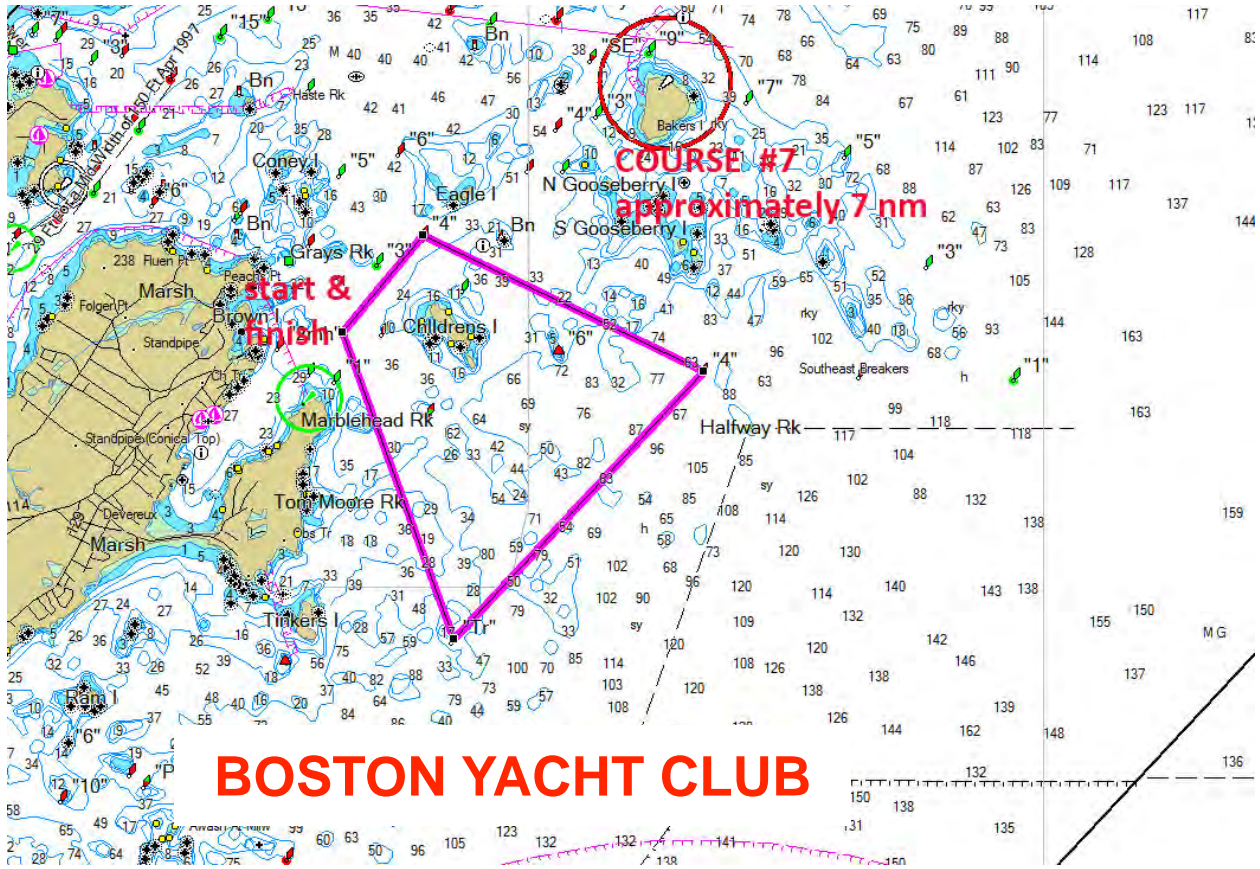
Course #5 is approximately 5 nautical miles long and will be sailed leaving all marks to either port or starboard.





Course #7 is approximately 7 nautical miles long and will be sailed leaving all marks to either port or starboard.

Flags will indicate which direction as shown below the course chart. Start & finish will be between the Signal boat's orange (start) or blue (finish) flag & a green tetrahedron.



	<p>Number 5 flag – Sail Course #5</p>		<p>Number 5 flag – Sail Course #5</p>
	<p>Red flag – Leave all marks to Port</p>		<p>Green flag – Leave all marks to Starboard</p>



 <p>7</p>	<p>Number 7 flag – Sail Course #7</p>	 <p>7</p>	<p>Number 7 flag – Sail Course #7</p>
	<p>Red flag – Leave all marks to Port</p>		<p>Green flag – Leave all marks to Starboard</p>