

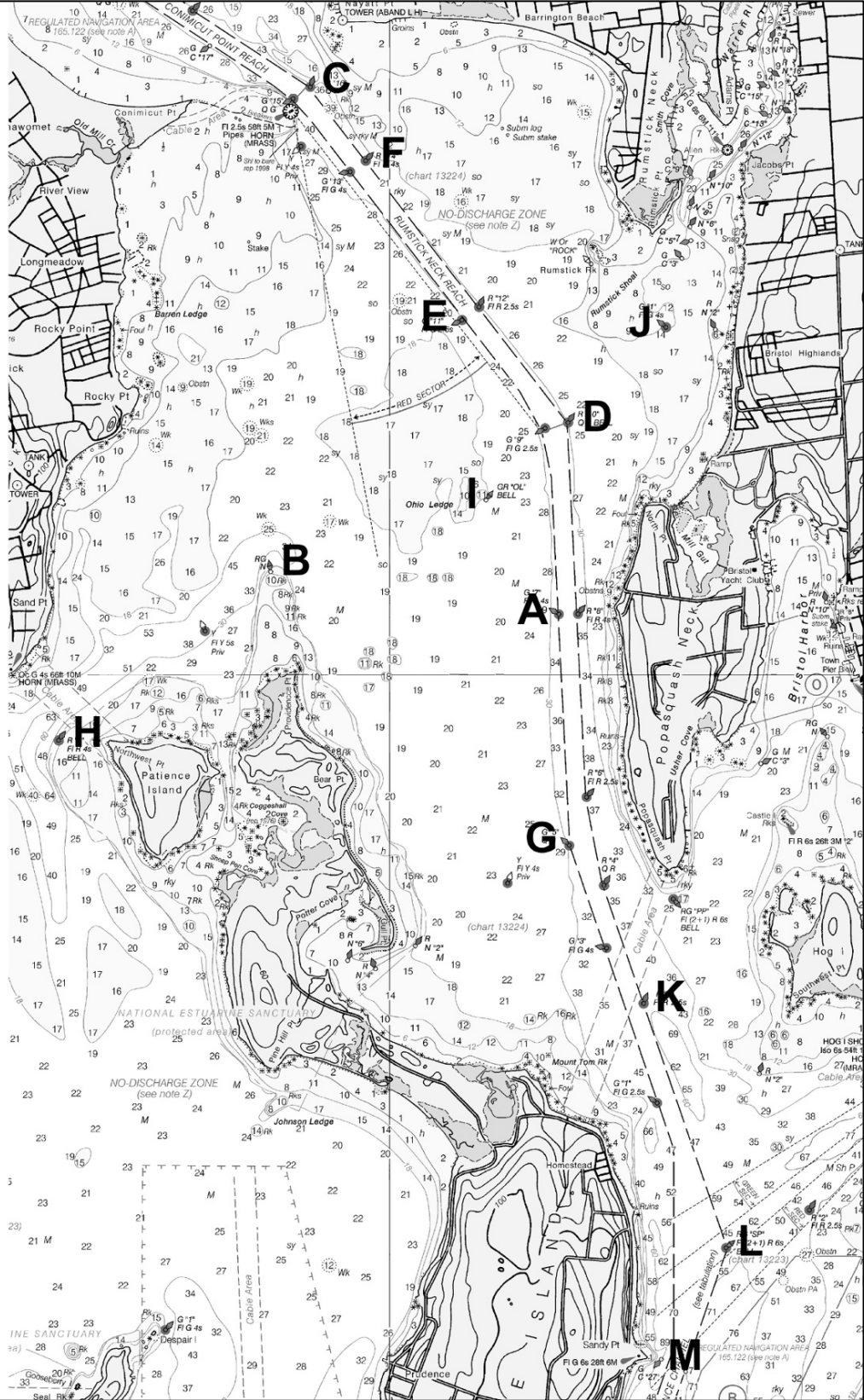
Pret Gladding Memorial Race

Saturday, May 30, 2026

Appendix B

Government Marks for use by BYC Race Committee

- A** G "7" FIG 4s
- B** RG Nun
Providence Point
- C** R "16" QR
Nayatt Point
- D** R "10" QR BELL
- E** G "11" FIG 2.5s
- F** R "14" FIR 4s
- G** G "5" QG
Poppasquash Point
- H** R "8" FIR 4s BELL
Warwick Point
- I** GR "OL" BELL
Ohio Ledge
- J** G "1" FIG 4s
Rumstick Point
- K** R "2" FIR 2.5s
- L** RG "SP"
FI (2+1) R 6s BELL
- M** GC "27"

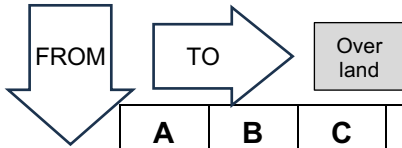


Pret Gladding Memorial Race

Saturday, May 30, 2026

Appendix B

Government Marks – Bearings and Ranges



	A	B	C	D	E	F	G	H	I	J	K	L	M
A		294	350	020	358	352	192	270	346	034	182	179	186
		1.6	3.1	1.0	1.7	2.7	1.2	2.8	0.7	1.6	2.1	3.5	4.0
B	114		020	080	054	028	148	246	088	076	154	160	168
	1.6		2.6	1.8	1.7	2.3	2.2	1.4	1.2	2.5	3.1	4.4	4.7
C	170	200		156	162	156	176	214	172	139	174	174	179
	3.1	2.6		2.3	1.5	0.5	4.3	3.7	2.4	2.3	5.2	6.6	7.1
D	020	260	336		328	336	194	252	242	060	187	183	189
	1.0	1.8	2.3		0.8	1.8	2.3	3.2	0.6	0.7	3.2	4.5	5.0
E	178	234	342	148		348	182	236	188	106	179	178	183
	1.7	1.7	1.5	0.8		1.0	2.9	3.1	1.0	1.1	3.8	5.2	5.7
F	172	208	336	156	168		178	224	174	135	176	176	180
	2.7	2.3	0.5	1.8	1.0		3.8	3.5	1.9	1.8	4.8	6.1	6.6
G	012	328	256	014	002	358		296	000	025	169	173	184
	1.2	2.2	4.3	2.3	2.9	3.8		2.8	1.9	2.8	0.9	2.3	2.8
H	090	066	034	72	056	044	116		076	070	129	142	150
	2.8	1.4	3.7	3.2	3.1	3.5	2.8		2.6	3.9	3.5	4.5	4.7
I	166	268	352	062	008	354	180	256		062	177	176	183
	0.7	1.2	2.4	0.6	1.0	1.9	1.9	2.6		1.3	2.8	4.2	4.7
J	214	258	319	240	286	315	205	250	242		196	190	194
	1.6	2.5	2.3	0.7	1.1	1.8	2.8	3.9	1.3		3.6	4.9	5.5
K	002	334	354	007	359	356	349	309	357	016		175	191
	2.1	3.1	5.2	3.2	3.8	4.8	0.9	3.5	2.8	3.6		1.4	1.9
L	359	340	354	003	358	356	354	322	356	010	355		224
	3.5	4.4	6.6	4.5	5.2	6.1	2.3	4.5	4.2	4.9	1.4		0.7
M	006	348	359	009	003	000	004	330	003	014	011	044	
	4.0	4.7	7.1	5.0	5.7	6.6	2.8	4.7	4.7	5.5	1.9	0.7	