



# 2024-2025 Island Fever Midwinter Series

## Sailing Instructions

Organizing Authority: South Beach Yacht Club



### **1. Rules**

- 1.1. The regatta will be governed by the rules as defined in The Racing Rules of Sailing 2021-2024 (RRS).
- 1.2. As allowed by RRS 40.2, RRS 40.1 will apply without a "Y" flag being displayed; all competitors are required to wear lifejackets or other Personal Floatation Devices.
- 1.3. The first two sentences of RRS 44.1 are changed to: 'A boat may take a One- Turn Penalty when she may have broken a rule of Part 2 or RRS 31 while racing. However, when she may have broken a rule of Part 2 while in the zone around a mark other than a starting mark, her penalty shall be a Two-Turns Penalty.

### **2. Entry**

- 2.1. Eligible boats shall complete registration online in accordance with the Notice of Race:  
<https://southbeachyachtclub.org/regatta/NKxo6F6mmv>
- 2.2. All keel boats are invited to participate. Each boat shall have a 2024 Northern California PHRF certificate.
- 2.3. Boats without a 2024 Northern California PHRF handicap certificate will be assigned a PHRF rating by the Race Committee.
- 2.4. One Design Fleets will be made at the discretion of the Organizing Authority

### **3. Signals Made Ashore**

- 3.1. Signals made ashore will be displayed from the Mast on the South Beach Yacht Club Clubhouse upper deck and at the east end of South Beach Marina South breakwater.
- 3.2. When the AP flag is displayed ashore, "1" minute is replaced by "not less than 30 minutes".

### **4. Communications with Competitors**

- 4.1. Official Notices will be posted on the series electronic bulletin board:  
<https://southbeachyachtclub.org/regatta/NKxo6F6mmv>  
Changes to the Sailing Instructions will be posted by 1000 on the day they are to take effect.
- 4.2. A working and monitored VHF radio is required to participate in this series.
- 4.3. The VHF channel will be 78 unless a conflict with other users arises. Should that occur, the L flag will be flown, indicating "on the water SI change." Alternate channels may be 68, 71 or 72. This changes RRS "Race Signals."
- 4.4. Communication from the Race Committee shall not be considered outside assistance.  
This changes RRS 41.

### **5. Number and Schedule of Races:**

- 5.1. Five race days are planned, with up to two races per day: 16 Nov., 14 Dec., 25 Jan., 22 Feb., 16 March.
- 5.2. The scheduled time for the first Warning Signal is 1300 hours
- 5.3. Time permitting, a second race each day will be announced by VHF radio.
- 5.4. No race shall be started after 1500 hours.

## 6. Racing Area

6.1. The races will be held in the South and Central Bay waters of San Francisco Bay.

## 7. Courses & Marks

7.1. Courses, mark descriptions and a chartlet are described in Appendix A, "2024-2025 Island Fever Midwinter Courses and Marks."

7.2. No later than the Warning Signal, Digiboards will be displayed from the end of the South Beach Harbor south breakwater (Courses 1-10) or Committee Boat (Courses 11-30) designating the course to be sailed.

7.3. When sailing courses starting from the Committee Boat (Courses 11-30): No later than the warning signal, a flag designating the mark rounding direction will be displayed from the signal boat.

7.3.1. If a red flag is displayed, all temporary marks, shall be rounded to port.

7.3.2. If a green flag is displayed, all temporary marks, shall be rounded to starboard.

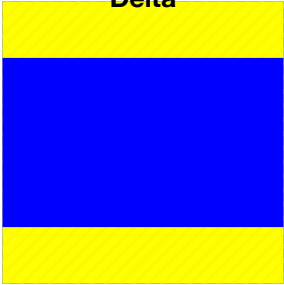

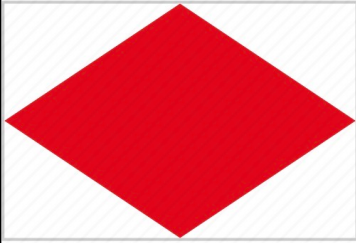

7.3.3. Absence of a rounding flag when temporary marks are set shall be interpreted by all boats to mean all temporary marks are to be rounded to port.

7.4. The leeward mark (L) will be a single leeward mark which is to be rounded in the same direction as described in 7.3.

7.5. The windward (W) mark is to be sailed in the direction displayed on the Committee boat as described in 7.3.

## 8. Starting Order

8.1. The intended starting order is as follows, but may be altered at the discretion of the PRO.

1	2	3	4
<p><b>Spinnaker: PHRF below 100 Delta</b></p> 	<p><b>Spinnaker: PHRF 100 - 150 Echo</b></p> 	<p><b>Spinnaker: PHRF above 150 Foxtrot</b></p> 	<p><b>Non-Spinnaker Golf</b></p> 

## 9. The Start

9.1 For any race date, one of two starting lines will be used:

9.1.1 When flag **Charlie** is displayed on the SBYC Club Deck, the Start (and Finish) line will



be between the green channel marker FI G 2.5s "1" and the northeast corner of Pier 48.

9.1.1a A boat whose starting signal has not been made shall remain outside of McCovey Cove and clear of the start line until they are invited by radio into the Cove by the Race Committee.

9.1.1b. Check-in will be done visually by Race Committee after boats of that division are invited into the Cove.

9.1.1c. For safety, boats may keep their motors running until the One Minute Signal.

9.1.1d. A boat may not raise her spinnaker until she has cleared the starting line. Any boat doing so must lower her spinnaker, return to the starting area and cross the starting line without her spinnaker raised or she shall be classified as DNS.

- 9.1.2 **When flag Charlie is NOT displayed on the SBYC Club Deck**, the starting line will be between a staff displaying an orange flag on the Committee boat and a temporary orange mark designated as T1. In the case that T1 is not set, the starting line pin shall be YRA mark "SC1".
- 9.2. Each boat is requested to sail by the committee boat prior to the first warning to check in. There will be no radio check-in. Requests for check-in confirmation by radio will be ignored.
- 9.3. The Race Committee reserves the right and option to combine fleets into a single start, in which case class flags will be flown simultaneously. Division scoring will not be affected.
- 9.4. A boat starting later than 4 minutes after her start signal will be scored DNS without a hearing. This changes RRS A4 and A5.

## **10. The Start Sequence – This changes RRS 26**

- 10.1. Course number may be displayed by Digiboards and/or announced on the VHF race channel.
- 10.2. Rolling starts will not be used.

**11. Recalls:** The Race Committee may hail the sail numbers(s) of the boat(s) identified On Course Side (OCS) of the starting line at the starting signal. The failure of a hail, the failure of a boat hearing the hail or the order of the hails shall not be grounds for redress. This changes RRS 62.1(a).

## **12. The Finish**

- 12.1. The finish line shall be announced by VHF radio.
- 12.1.1 If two races are likely, due to wind and schedule, the first race will finish at the starting line.
- 12.1.2 Any race sailed on Courses 1-10 will finish at the entrance to McCovey Cove, between the north-eastern corner of Pier 48 and the green channel marker FL G 2.5s "PA". The second or last race of the day may end at this line at the discretion of the Race Committee.
- 12.2. Boats retiring before finishing shall notify the Race Committee as soon as practical either on the race VHF channel or 650-773-2467 (Race Series Chair).

## **13. Restricted Areas -- Boats shall not pass through the following areas:**

- 13.1 Inside the breakwater wall of South Beach Harbor after their start;
- 13.2 For safety, the line bounded the Bell Buoy (GR "AZ" Fl [2+1] 6s) off the West end of Alcatraz Island and the closest point ashore (Alcatraz Island) is an obstruction. Similarly, the line from the southeast tip of Yerba Buena Island to the buoy "2" Fl 2.5s is an obstruction.
- 13.3 Any boat sailing across either through or within the Restricted Areas while racing may be subject to protest.
- 13.4 Boats whose preparatory signal has not been made shall keep clear of any boat whose preparatory signal has been made.

**14. COMMERCIAL TRAFFIC AND SAFETY** Boats shall not impede the passage of commercial vessels and shall comply with the USCG Navigation Rules. Any boat observed by the race committee to be in violation of this instruction may be scored DNF without a hearing. This changes RRS 63.1.

## **15. Time Limits**

- 15.1 A boat failing to finish within 45 minutes after the first boat in her division sails the course and finishes will be scored "DNF" by the RC. This changes RRS 35, A4 and A5. 15.3. The time limit for the first boat in each division to sail the course and finish shall be two hours.
- 15.2 For races finishing in the cove, the Race Committee will be on station at the Finish Line until 1700. Boats finishing later than 1700 hours shall take their own finishing time and the names of surrounding boats, where possible, and report it to the Race Committee no later than 1900 hours.

## **16. Scoring**

- 16.1. Time on Time corrections shall be used; corrected times will be calculated to the nearest second.
- 16.2. Fleet and division assignments is at the sole discretion of the Race Committee.
- 16.3. Four completed races constitute a series.
- 16.4. RRS A5.3 will apply.
- 16.5. There will be one excluded score if 5 races are completed, and a second excluded score if 10 races are completed.

## **17. PROTESTS AND REQUESTS FOR REDRESS**

- 17.1. Protests and requests for redress may be written on Standard US Sailing Protest Forms available from the Race Committee. Protests and Requests for Redress for all divisions shall be delivered to a Race Committee representative no later than 1900 hours on the day of the race. Requests received after that time will be used to build a nest for Phyllis, our flamingo mascot.
- 17.2. Unless otherwise posted, the protest will be heard the Thursday following the race being protested at 1900 in the office at South Beach Yacht Club. This shall serve as proper notification per RRS 63.2.
- 17.3. Except for RRS 69 and at the discretion of the Protest Committee Chair, hearings will take place as scheduled, with or without the presence of all parties.

## **18. Awards**

- 18.1. Prizes will be awarded at the end of each race day for the first-place winner in each division of each race.
- 18.2. Prizes must be picked up by the end of the next race.
- 18.3. Prizes for first, second and third places for each division will be awarded at the end of the Series.
- 18.4. The first boat to officially abandon a race no boat is eventually able to finish will be given the **Reality Check Prize**, an award of superlative status, dubious value and challenging aesthetics. It is recommended that the last boat on course buy the Race Committee a round of drinks after such a race.



## APPENDIX A: 2024-2025 Island Fever Midwinter Courses and Marks

**Round all Marks to Port unless noted by (S) then round to Starboard.**

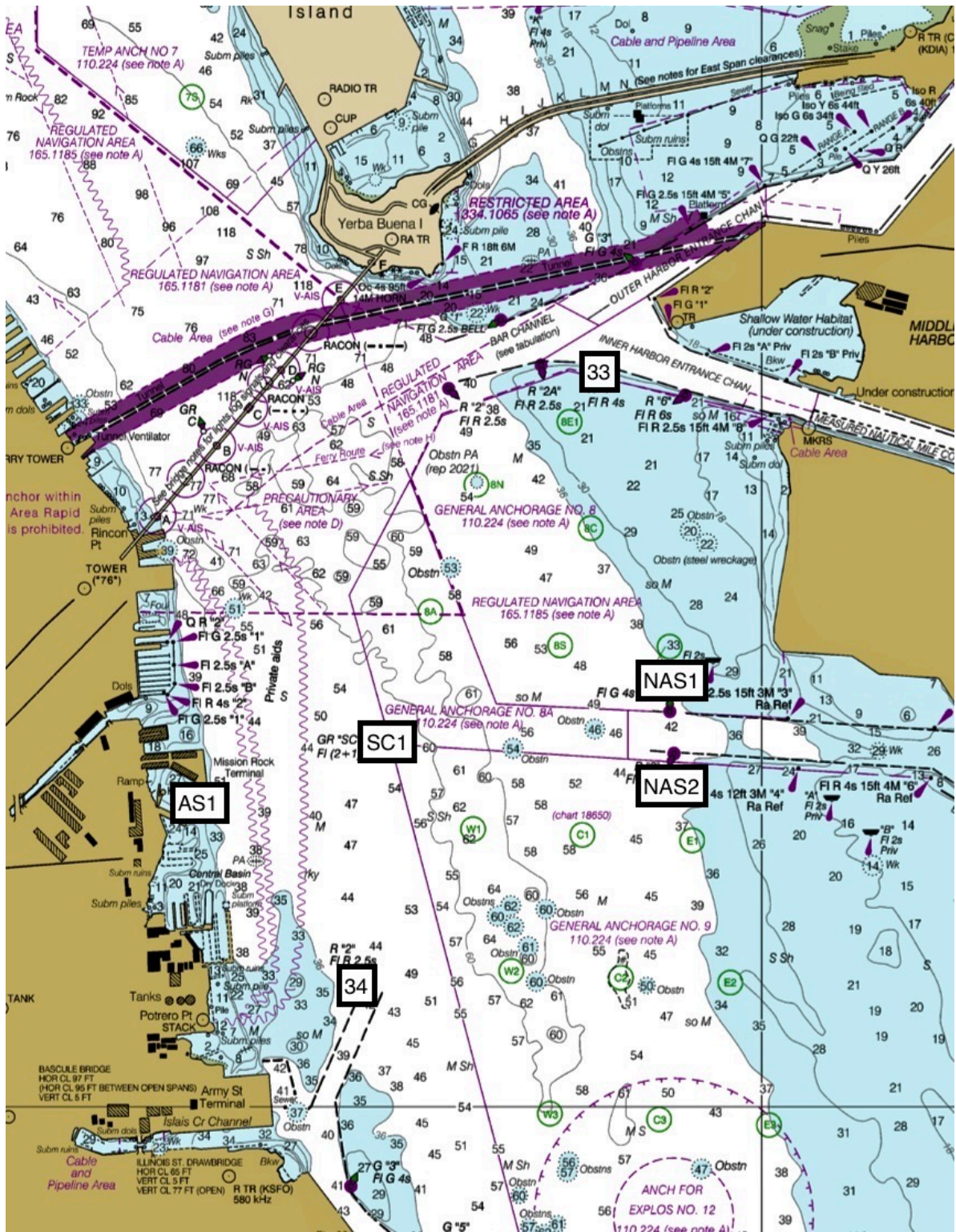
**Islands may be rounded from either direction.**

Courses 1-10: Starting and finishing at the entrance to McCovey Cove - Flag Charlie is flying at SBYC deck									
	Course Description								Dist.(mi)
1	Start	Alcatraz Island	F						7.9
2	Start	YB/TI	F						7.7
3	Start	33 (S)	F						4.5
4	Start	NAS 2	33	F					6.0
5	Start	NAS 2	AS1	SC1	F				5.9
6	Start	33 (S)	SC1 (S)	F					4.9
7	Start	NAS 2	SC1	NAS 2	F				6.7
8	Start	SC1	F						1.9
9	Start	SC1 (S)	34	NAS 2	F				5.4
10	Start	33 (S)	SC1 (S)	33 (S)	SC1 (S)	F			8.3
Courses 11-18: Start/finish line runs from the Committee Boat to permanent mark SC1									
11	Start	Alcatraz	F						
12	Start	YB/TI	F						
13	Start	YB/TI	AS1	F					
14	Start	33	F						
15	Start	AS1	NAS 2	F					
16	Start	AS1	NAS2	AS1	NAS2	F			
17	Start	AS1	34	NAS 2	F				
18	Start	YB/TI	34	F					
Courses 21-29: Start/finish lines are between the Committee Boat and designated temporary mark									
21	Start	W	L	F					3.6
22	Start	W	L	W	L	F			5.8
23	Start	W	L	W	L	W	L	F	8
24	Start	W	34	F					
25	Start	W	SC1	F					3.5
26	Start	W	SC1	W	SC1	F			5.8
27	Start	W	NAS1(P) or NAS2(S)	F					7.15
28	Start	W	NAS1(P) or NAS2(S)	AS1	SC1	F			9.15
29	Start	W	34	SC1	34	F			
30	Start	33 (S)	L (S)	F					

## Description of Marks and Lines

Mark	Mark Description	Mark	Mark Description
<b>Start</b>	<p><b>Courses 1-10:</b> The starting line runs between the northeast corner of Pier 48 and the green channel marker FI G 2.5s “1.”</p> <p><b>All other courses:</b> The starting line will be between a staff displaying an orange flag on the RC boat and a temporary orange mark called T1. In the absence of T1, SC1 will be the start line pin.</p>	<b>Finish (F)</b>	Finish line will be announced by VHF radio and will either be the Start line (for courses 11-29) or between the northeast corner of Pier 48 and Green channel marker FL G 2.5s “PA” (for courses 1-10).
<b>YB/TI</b>	Yerba Buena Island and Treasure Island	<b>NAS 1</b>	NAS1 Alameda Channel Marker “1” FL G 4s Bell
<b>Alcatraz</b>	Alcatraz Island (note exclusion zone)	<b>NAS 2</b>	NAS2 Alameda Channel Marker “R2” FI R 4s
<b>SC1</b>	Red & Green buoy “SC” FI G(2+1), approx. 1.0 nm ENE of Mission Rock Terminal	<b>33</b>	Red Buoy “4” FL R 4s, Oakland Inner Harbor Entrance Channel
<b>AS1</b>	Yellow sombrero buoy, approx. 0.25 nm East of BVBC	<b>34</b>	FI R 2s Red buoy “2” 2.0s, approximately 0.5 nm east of Potrero Point
<b>W</b>	An inflatable orange mark, 5-8 feet tall, located approximately one mile upwind of the starting line. It is to be rounded in the direction indicated by signal flag on the Committee Boat.	<b>L</b>	An inflatable orange mark, 5-8 feet tall, located downwind of the starting line. It is to be rounded in the direction indicated by signal flag on the Committee Boat.

# 2024-2025 SBYC Island Fever Midwinter Series Chartlet



33

NAS1

SC1

NAS2

34

ANCH FOR EXPLOS. NO. 12

