

SAILING INSTRUCTIONS

2024 Sonar World Championship

Noroton Yacht Club

September 11-15, 2024

PUBLISHED September 9, 2024

The notation '[DP]' in a rule in the notice of race (NoR) or sailing instructions (SIs) means that the penalty for a breach of that rule may, at the discretion of the protest committee, be less than disqualification. The notation '[NP]' in a rule of the NoR or SIs means that a boat may not protest another boat for breaking that rule. This changes RRS 60.1(a).

1. RULES

- a. The Organizing Authority (OA) is Noroton Yacht Club in conjunction with the International Sonar Class Association.
- b. The event will be governed by the *rules* as defined in the Racing Rules of Sailing (RSS) and the [rules of the International Sonar Class Association](#).
- c. Only the following US Sailing Prescriptions to RSS 60.3, 61.4, 63.2, 67, 76.1 and Appendix V1 will apply. They are shown in Attachment A.
- d. If there is a conflict between languages the English text will take precedence.

2. CHANGES TO SAILING INSTRUCTIONS

- a. Any change to the Sailing Instructions (SI) will be posted no later than 2 hours before the scheduled warning signal for the first race on the day it will take effect, except that any change to the schedule of races will be posted by 2100 on the day before it will take effect

3. COMMUNICATION

- a. Notices to competitors will be posted on the [online official notice board](#) . As a courtesy, announcements on WhatsApp will alert competitors of new notices. QR codes will be posted around the club with links to these channels.
- b. The race office is located in/near the Regatta Room at Noroton YC.
- c. On shore, the OA, Race Committee (RC) and International Jury will communicate with competitors using WhatsApp. The QR code to join the WhatsApp group will be available at the club, posted on [the event website](#), or [click here](#).
- d. On the water, the RC will use VHF Channel 73 to monitor and communicate with the fleet. Failure to make these broadcasts or failure to include a bow#/sail# or failure to hear them shall not be grounds for granting redress unless initiated by the Race Committee. This changes RRS 62.1.
- e. Noroton YC dock house and staff monitor VHF channel 72 for launch services and communications.
- f. [DP]While racing, except in an emergency, a boat shall not make voice or data transmissions and shall not receive voice or data communication that is not available to all boats.

4. CODE OF CONDUCT

- a. [DP] Competitors and Support Persons shall comply with reasonable requests from Race Officials.

5. SIGNALS MADE ASHORE

- a. Signals made ashore will be displayed on the flagpole on the patio of Noroton YC and posted on WhatsApp. Failure to post to WhatsApp will not be grounds for a boat to request redress.

2024 Sonar World Championship
Sailing Instructions

- b. When AP is signaled ashore, “1 minute” is replaced with “not less than 60 minutes” in Race Signals AP.

6. SCHEDULE

Tuesday, Sept 10	1200-1899	Measurement/Inspection
Wednesday, Sept 11	0900–1700	Measurement/Inspection
	1200–1800	Check-in
	1400	Practice race warning signal
	1800	Welcome / opening ceremony & reception
	1820	Competitors meeting
Thursday, Sept 12	1100	First warning signal
	After racing	Refreshments & Mount Gay daily awards
	1830	Sonar Class annual meeting
	1930	Casual dinner
Friday, Sept 13	1100	First warning signal
	After racing	Refreshments
Saturday, Sept 14	1100	First warning signal
	After racing	Refreshments
	1930	Regatta dinner
Sunday, Sept 15	1000	First warning signal
	1400	No warning signal after this time
	After racing	Awards & refreshments

- a. A maximum of 12 races may be sailed, however no more than four (4) races may be sailed on any race day. The number of races run by the RC shall not constitute an action or omission as a basis for a boat to request redress. This changes RRS 62.1(a)

7. CLASS FLAG

- a. The Class Flag will be a white flag with a red Sonar Class symbol.

8. RACING AREA

- a. The location of the racing area will be approximately 1- 2 miles SE to SW of G "1" at the mouth of Darien Harbor, in Long Island Sound. See Attachment B.

9. COURSES

- a. The courses will be in a Windward – Leeward configuration. See Attachment C.
 b. No later than the warning signal, the RC signal vessel will display the course and the approximate compass bearing and distance of the first leg.
 c. [NP]The leeward gate will be set approximately 0.1 nautical miles to windward of the starting line. If only a single mark is laid it shall be left to port.

10. MARKS

- a. Marks of the course will be orange inflatable tetrahedrons.
 b. The starting marks will be the RC signal vessel at the starboard end, and port pin end vessel or displaying an orange flag or a green inflatable buoy.
 c. The finishing marks will be an RC service/mark vessel at the starboard end, and a port pin end vessel or a green inflatable buoy.
 d. Change marks are inflatable yellow buoys.

2024 Sonar World Championship
Sailing Instructions

11. THE START

- a. Prior to the first warning signal of the first race of the day, boats shall sail on starboard tack, passing the stern of the RC signal vessel displaying flag L, to be recorded.
- b. The starting line will be between a staff displaying an orange flag on the signal vessel and either the course side of a nearby inflatable mark or a staff displaying an orange flag on an RC pin vessel.
- c. The RC will attempt to hail individual recalls on VHF 73 using bow or sail numbers. This changes RRS 29.1. The failure to hail, the order in which boats are hailed, or the untimely hail of a boat or boats shall not be grounds for requesting redress. This changes RRS 62.1 (a).
- d. As a courtesy, the bow or sail numbers of the boats scored OCS, UFD or BFD will be posted on a white board on the RC signal vessel.
- e. In the event of a RRS 30.4 start that is recalled or abandoned, boat numbers identified as BFD will be posted using bow numbers or sail numbers. This changes RRS 30.4.
- f. A boat starting later than 5 minutes after her starting signal will be scored Did Not Start (DNS) without a hearing. This changes RRS A5.1 and A5.2.

12. CHANGING THE NEXT LEG OF THE COURSE

- a. To change the next leg of the course, the RC will lay a new mark (or move the finishing line) and remove the original mark as soon as practicable. When in a subsequent change a new mark is replaced, it will be replaced by an original mark.
- b. The RC may tweak the course during a race, of no more than 10 degrees or 0.1 nm, to maintain course alignment, without signaling a change. The changes RRS 33.
- c. If the Mark 1 is changed, Mark 1a will be reset.
- d. If only one gate mark (2s/2p) is set, that mark shall be left to port.

13. THE FINISH

- a. The finishing line will be between a staff displaying a blue flag on the finishing/Signal vessel and either the course side of a nearby inflatable mark or a staff displaying a blue flag on an RC vessel.

14. PENALTY SYSTEM

- a. In accordance with RRS Appendix N, an International Jury (Jury) will be appointed, and all decisions will be final.
- b. A boat that has taken a penalty or retired under RRS 44.1 shall complete and submit a written acknowledgment form which will either be available at the Jury desk, or online, within the protest time limit.

15. TIME LIMITS

- a. If no boat has passed Mark 1 within 40 minutes the race will be abandoned.
- b. The time limit for the first boat to finish the race is 120 minutes.
- c. Boats failing to finish within 30 minutes of the first boat sails the course and finishes will be scored Time Limit Expired (TLE) without a hearing. TLE is defined as the number of finishers plus 2. This changes RRS 35, A4, and A5.

16. HEARING REQUESTS

- a. Requests for a hearing shall be lodged electronically via [this online form](#) (accessible by smartphone or PC without need to log-in and the link is also available on the [event website](#)),

2024 Sonar World Championship
Sailing Instructions

within the appropriate time limit. Submissions of hearing requests into this system will be considered as delivered to the Protest Committee. Once delivered, a hearing will be automatically displayed on the [list of pending hearings](#). The list will be displayed on a monitor near the regatta office as well as [online here](#), and at a link posted on the [event website](#). If a protest/request does not appear on the list, then it has not been received.

- b. As the RC signal vessel docks, the RC will make one sound and post the time limit on the official notice board. The protest time limit is 30 minutes after the display of this signal.
- c. Notices will be posted [only online](#) no later than 30 minutes after the protest time limit to inform competitors of hearing in which they are parties or named as witnesses. As a courtesy, announcements on WhatsApp will alert competitors of new notices from the Jury.
 - i. Hearings will be held in the protest room, the Regatta Room.
 - ii. Protests referred to the Jury from the arbitrators will be added to the list of scheduled protests as they become available from arbitration.
- d. Notices of protest by the RC or Jury will be [posted only online](#) to inform boats under RRS 61.1(b).
- e. The scoring abbreviation for a discretionary penalty imposed by the Jury will be DPI.
- f. For boats scored OCS, UFD, or BFD (on the Signal vessel and on the official notice board) before the protest time limit, a request for redress based on such a posted score shall be made only online, and no later than one hour after the protest time limit. This changes RRS 62.2.
- g. World Sailing APPENDIX T: ARBITRATION T1, T2, T3 and T4 will apply as changed: T1(b) A post-race penalty is a 20% Scoring Penalty if taken before the protest time limit or a 30% Scoring Penalty if taken after the protest time limit but before the beginning of a hearing involving the incident. Scoring Penalty calculated as stated in rule 44.3(c). However, RRS 44.1(a) applies.

17. SCORING

The Low Point scoring system RRS Appendix A will be apply, however RRS A2 is changed as follows:

- a. When six (6) or more races have been completed, a boat's series score will be the total of her race scores excluding her worst score.
- b. Four (4) races are required to be completed to constitute the Championship.

18. SAFETY

- a. [DP] The safety of a boat and her entire management, including insurance, shall be the sole and inescapable responsibility of the owner and/or entrant.
- b. [DP] A boat that retires from a race shall notify the race committee at the first reasonable opportunity on VHF channel 73.
- c. [DP] Competitors leaving the racecourse before the end of a race shall inform the RC, the Jury, or the Race Office as soon as possible on VHF channel 73
- d. [DP] Competitors not leaving the dock on a race day shall inform the Jury or the Race Office on VHF channel 73.
- e. When the RC displays flag "T" with one sound, all boats shall get on a tow and remain on a tow until back at the dock or released by the RC lowering flag "T" with one long sound. Tows will be available from all RC boats.

19. REPLACEMENT OF CREW OR EQUIPMENT

- a. [DP] Competitors shall sail with the number of crew registered on their race entry and may not change the number of crew without express written permission of the PRO **and** Chief Judge.

2024 Sonar World Championship
Sailing Instructions

- b. [DP] Substitution of competitors during the regatta will not be allowed without prior written approval of the PRO **and** Chief Judge.
- c. Substitution of damaged or lost equipment will not be allowed unless authorized, in writing, by the Chief Judge. Requests for substitution shall be made at the first reasonable opportunity.
- d. All written requests for crew or equipment change will be answered, in writing, and posted on the official notice board.

20. EQUIPMENT AND MEASUREMENT CHECKS

- a. A boat or equipment may be inspected at any time for compliance with the class rules.
- b. On the water, a boat can be instructed by the measurer to proceed immediately to a designated area for inspection.

21. TRASH DISPOSAL

- a. Trash may be placed aboard official or support person vessels.

22. SUSTAINABILITY

- a. [DP] Use of single-use plastic bottles is discouraged.
- b. Water bottles may be refilled at a filtered refilling station on the East wall of the clubhouse adjacent to the Junior sailing room.
- c. [DP] Recyclable waste should be placed in the clearly marked receptacles.

23. LAUNCHING, BERTHING AND HAUL OUT

- a. Boats are **not** required to remain in the water overnight and may be hauled out each evening, and launched each morning. Those wishing to remain in the water on any given overnight may string between two float docks. Boats shall not dock overnight on the docks servicing the hoists. Overnight moorings are also available.
- b. It is the responsibility of each boat to launch and sail to the starting area in time for the First Warning. Failure to allow sufficient time to launch shall not be grounds for redress.
- c. A map of assigned dry-sail parking spaces will be posted on the [Official Notice Board](#).
- d. In the event of a forecast of bad weather, the event chair may announce that boats shall be hauled out and post that announcement on the official notice board and on WhatsApp.
- e. [NP] During haul out on Sunday, priority may be given to boats that have the furthest to travel.

24. COACH AND SUPPORT BOATS

- a. Coach and support person vessels shall register at the Race Office during the registration/check-in period and are required to comply with local law and event support regulations.
- b. Coach and support person vessels shall display an identifying flag provided by the OA at registration.
- c. On race days, from the moment the competitor leaves the dock or mooring until the end of racing for the day, coach and support person vessels shall not communicate any information to competitor boats that could affect performance or racing.
- d. Unless instructed by the RC, coach and support boats are not allowed:
 - i. within 100 yards of the starting line after the warning signal for a start sequence
 - ii. inside the racecourse during a race
 - iii. to be within 100 yards of competing boats (including mark roundings)
- e. Coach and support person vessels may not provide provisions or equipment to competitors

2024 Sonar World Championship
Sailing Instructions

without express permission from the Chief Judge or Jury, which will be made in writing on shore, after racing and be posted on the official notice board.

- f. Coach and support vessel drivers and crews shall wear a personal flotation device securely fastened at all times when afloat except briefly while changing or adjusting clothing or personal equipment. Wetsuits and drysuits are not personal flotation devices.
- g. All Coach and support vessels shall be equipped with a functioning engine safety cut-off switch (kill switch) which shall remain attached to the support person at the helm, at all times, while the engine is running. Failure to comply may be the subject of a support person hearing under RSS 64.5.
- h. Coaching and support vessels shall carry a VHF radio with US channels, monitor RC communications, and, if called upon, be available for safety assistance.

25. AWARDS

- a. The Sonar Class Perpetual Trophy will be awarded to the winner of the Championship.
- b. Awards will be presented to the skipper and crew of the first five (5) boats in the Championship.

26. RISK STATEMENT AND DISCLAIMER OF LIABILITY

- a. RRS 3 states: 'The responsibility for a boat's decision to participate in a race or to continue to race is hers alone.' By participating in this event each competitor agrees and acknowledges that sailing is a potentially dangerous activity with inherent risks. These risks include strong winds and rough seas, sudden changes in weather, failure of equipment, boat handling errors, poor seamanship by other boats, loss of balance on an unstable platform and fatigue resulting in increased risk of injury. Inherent in the sport of sailing is the risk of permanent, catastrophic injury or death by drowning, trauma, hypothermia or other causes.

27. FURTHER INFORMATION

[Event website](#) [Official Notice Board](#) [Protest/redress form](#) [Protest/redress list](#)

Event location:

Noroton Yacht Club

23 Baywater Drive
Darien, CT 06820
www.norotonyc.org

General Manager

Scott Van Dusen
scott@norotonyc.org

Sailing & Waterfront Director

Alec Basilion
alec@norotonyc.org

Sailing Program Manager

Molly Weiner
mweiner@norotonyc.org

Regatta Co-Chairs

Michael Rudnick Janet Grapengeter
michael.rudnick@gmail.com janet.grapengeter@gmail.com

Principal Race Officer

Shannon Bush
swadero@gmail.com

Chief Judge

Andrew Alberti
Andrew@alberti.ca

Chief Measurer

Gene Hinkel
hinkelif@gmail.com

2024 Sonar World Championship
Sailing Instructions

ATTACHMENT A - US Sailing Prescriptions

A1. After rule 60.3 add:

“US Sailing prescribes that rule 60,3(b) is changed to: (b) request redress for a boat or call a hearing to consider redress.”

A2. Add rule 61.4:

“US Sailing prescribes that no fees shall be charged for protests or requests for redress.”

A3. After rule 63.2 add:

“US Sailing prescribes that when redress has been requested or is to be considered for one or more boats:

- (a) Any other boat may participate in the hearing.
- (b) The protest committee shall make a reasonable attempt to notify all boats of the time and place of the hearing and the reason for the request or for considering redress, and boats shall be allowed reasonable time to prepare for the hearing.
- (c) The protest committee shall request redress for boats
 - (1) that participate in the hearing, or
 - (2) that request in writing to do so before the hearing begins, making them parties to the hearing. It need not state a reason for such a request; this changes rule 62.2.”

A4. After rule 67 add:

“US Sailing prescribes that:

- a. A boat that retires from a race or accepts a penalty does not, by that action alone, admit liability for damages.
- b. A protest committee shall find fact and make decisions only in compliance with the rules. No protest committee or US SAILING appeal authority shall adjudicate any claim for damages. Such a claim is subject to the jurisdiction of the courts.
- c. A basic purpose of the rules is to prevent contact between boats. By participating in an event governed by the rules, a boat agrees that responsibility for damages arising from any breach of the rules shall be based on fault as determined by the application of the rules, and that she shall not be governed by the legal doctrine of ‘assumption of risk’ for monetary damages resulting from contact with other boats.”

A5. After rule 76.1 add:

”US Sailing prescribes that an organizing authority or race committee shall not reject or cancel the entry of a boat or exclude a competitor eligible under the notice of race and sailing instructions for an arbitrary or capricious reason or for reason of race, color, religion, national origin, gender, sexual orientation, or age.

“However, an organizing authority or race committee may exclude a competitor who is a

2024 Sonar World Championship
Sailing Instructions

citizen of, or holds a World Sailing ID as an MNA member of, a country listed on the US Sailing website at <https://www.ussailing.org/exclusion>.”

A6. **Add APPENDIX V ALTERNATIVE PENALTIES SECTION V1**

V1. PENALTIES AT THE TIME OF THE INCIDENT

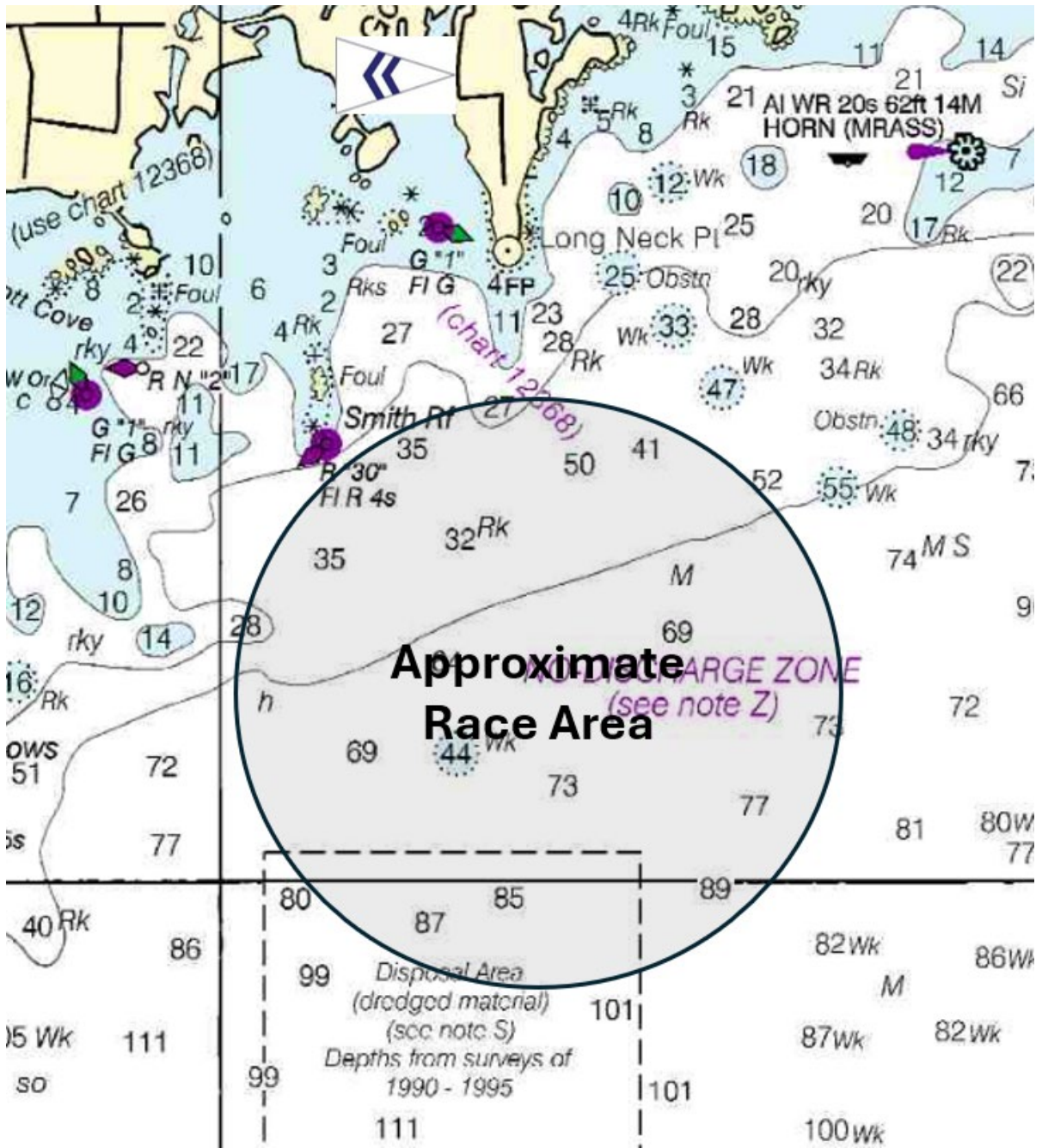
The first two sentences of rule 44.1 are changed to: ‘A boat may take a One-Turn Penalty when she may have broken a rule of Part 2 or rule 31 while *racing*. However, when she may have broken a rule of Part 2 while in the *zone* around a *mark* other than a starting *mark*, her penalty shall be a Two-Turns Penalty.’

2024 Sonar World Championship
Sailing Instructions

ATTACHMENT B - Racing Area

Dependent on weather conditions the RC will attempt to use the approximate racing area as shown below – approximately 1-2 miles south of Noroton Yacht Club

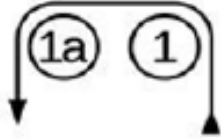
Not to be used for navigation



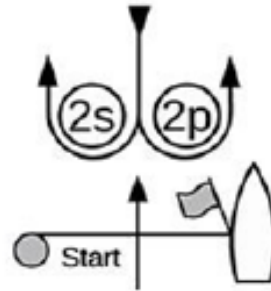
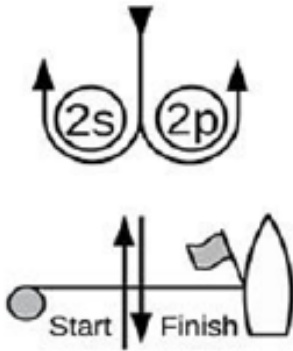
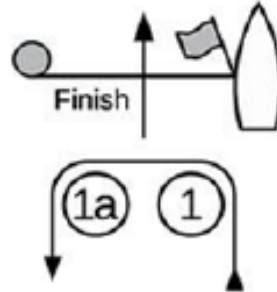
2024 Sonar World Championship
Sailing Instructions

ATTACHMENT C - Courses

L



W



Course L - Windward/Leeward with Offset Mark, Leeward Finish	
<i>Signal</i>	<i>Mark Rounding Order</i>
L2	Start - 1 - 1a - 2s/2p - 1 - 1a - Finish
L3	Start - 1 - 1a - 2s/2p - 1 - 1a - 2s/2p - 1 - 1a - Finish
L4	Start - 1 - 1a - 2s/2p - 1 - 1a - 2s/2p - 1 - 1a - 2s/2p - 1 - 1a - Finish

Course W - Windward/Leeward with Offset Mark, Windward Finish	
<i>Signal</i>	<i>Mark Rounding Order</i>
W2	Start - 1 - 1a - 2s/2p - Finish
W3	Start - 1 - 1a - 2s/2p - 1 - 1a - 2s/2p - Finish
W4	Start - 1 - 1a - 2s/2p - 1 - 1a - 2s/2p - 1 - 1a - 2s/2p - Finish