



# Barrington Yacht Club

Charles V. Cox Memorial Series – 2026

**Event Chair:** Charles Stoddard and Sam Sylvester

**PRO:** Clare McMillan

**Race Committee Chair:** Kristen Kreuzkamp (racing@barringtonyc.com)

## Sailing Instructions (SIs)

*The notation “[NP]” as it appears in a rule of the sailing instructions means that a boat may not protest another boat for breaking that rule. This changes RRS 60.1.*

### 1 RULES

- 1.1 The event is governed by the rules as defined in The Racing Rules of Sailing (RRS).
- 1.2 RRS Appendix V applies.

### 2 CHANGES TO SAILING INSTRUCTIONS

- 2.1 Any change to the sailing instructions will be posted before 16:00 on the day it will take effect, except that any change to the schedule of races will be posted by 20:00 on the day before it will take effect.

### 3 COMMUNICATIONS WITH COMPETITORS

- 3.1 Notices to competitors will be posted to the Clubspot event page located at: <https://theclubspot.com/regatta/WkZR0UavDX>.
- 3.2 On the water, the race committee will monitor and communicate with competitors on VHF radio channel 72.
- 3.3 Race committee broadcasts, including OCS hails, are courtesy only. Failure to make a broadcast or failure of a boat to hear a broadcast shall not be grounds for redress.
- 3.4 [NP] From the first warning signal until the boat finishes, retires, or the race committee signals a postponement, abandonment, or general recall, a boat shall not receive outside assistance except as permitted by RRS 41. This changes RRS 41.

### 4 CODE OF CONDUCT

- 4.1 [NP] Competitors and support persons shall comply with reasonable requests from race officials.

## **5 SIGNALS MADE ASHORE**

- 5.1 Signals made ashore will be displayed on the main flagpole at Barrington Yacht Club.
- 5.2 When flag AP is displayed ashore, '1 minute' is replaced with 'not less than 60 minutes' in Race Signals.
- 5.3 Code flag "N" hoisted shall mean racing for that day has been cancelled.
  - a. The race committee intends to make the decision to cancel by 17:00 on race day.

## **6 SCHEDULE OF RACES**

- 6.1 Series races: May 19, 26, June 2, 9, 16, 23, 30, July 7, 14, 21, 28, August 4, 11, 18, 25, September 1. Fall races (not counted for series scoring): September 8, 15, 22, 29.
- 6.2 The warning signal for the first class to start each day of racing will be at
  - a. 18:30 for all races held on or before September 1<sup>st</sup>.
  - b. 18:00 for all races held after September 1st (Fall Series).

## **7 CLASS FLAGS**

- 7.1 The class flag for the Spinnaker class is Pennant One.
- 7.2 The class flag for the One Design (J-29) class is Pennant Two.
- 7.3 The class flag for the Non-Spinnaker class is Pennant Three.
- 7.4 If any additional one design classes qualify, the class flag and starting order will be disseminated prior to 16:00 on the first day of racing for which the class is qualified (5 boats or more).

## **8 RACING AREA**

- 8.1 The racing area is the northern part of Narragansett Bay, as shown in Appendix A of this SI.

## **9 COURSES**

- 9.1 Courses will use either drop marks, fixed (government) marks or a combination thereof.
- 9.2 Appendix B of the SIs shows diagrams for drop mark courses including the approximate angles between legs, the order in which marks are to be passed and the side on which each mark is to be left.
- 9.3 Appendix A of the SIs shows a list of government aids to navigation which may be used as marks.
- 9.4 The race committee signal vessel will display, by no later than the warning signal, the approximate compass bearing and distance of the first leg for drop mark courses or the government marks to be used and order to be rounded for fixed mark courses.

## **10 MARKS**

- 10.1 Government mark courses: all marks will be government marks.
  - a. However, if an inflatable mark is used as the starting mark (as described in SI 10.2), it may also be used as a rounding mark of the course or a finish mark. If it is used as a rounding and/or finish mark, it will be designated as mark "X". X will be a yellow tetrahedron.
  - b. Marks shall be rounded in the order displayed on the course board. Marks with their letter circled shall be rounded to starboard; all others shall be rounded to port.

10.2 Inflatable marks will be used for drop mark courses:

- a. Rounding marks: orange tetrahedrons.
- b. Start/finish marks: yellow marks. The start/finish mark may also be used as the leeward mark.
- c. New marks: yellow tetrahedrons as provided in SI 12.

## **11 THE START**

- 11.1 If the starting line is at a spot different from Mark J (G1 "Flasher One", FI G 4 sec Rumstick Shoal), the committee will fly Signal Flag Lima and anchor at another site in the race area.
- 11.2 The starting line is between the staff or halyard displaying an orange flag on the race committee signal vessel at one end and the course side of the starting mark at the other end. The starting mark may be a government mark listed on the Course Matrix in Appendix A OR an inflatable mark as described in SI 9, above.
- 11.3 [NP] Boats racing in a class whose warning signal has not been made shall keep clear of the starting line area and boats preparing to start.
- 11.4 If any part of a boat's hull is on the course side of the starting line at her starting signal and she is identified, the race committee will attempt to hail her sail number. Failure to hail her number, failure of her to hear such a hail, or the order in which boats are hailed are not grounds for a request for redress. This changes RRS 61.4(b)(1).
- 11.5 A boat that does not start within 5 minutes after her starting signal will be scored Did Not Start (DNS) without a hearing. This changes RRS A5.1 and A5.2.

## **12 COURSE CHANGES**

- 12.1 To change the next leg of the course, the race committee will lay a new mark (or move the finishing line) and remove the original mark as soon as is practicable.
- 12.2 If a new mark is later replaced in a subsequent change, it will be replaced by an original mark.

## **13 THE FINISH**

- 13.1 The finishing line is between the staff or halyard displaying a blue flag on the race committee signal vessel at one end and the course side of the finishing mark at the other end.
- 13.2 If the race committee is absent when a boat finishes, she shall report her finishing time and position relative to nearby boats at the first reasonable opportunity. Failure to do so may result in scoring at the discretion of the race committee.
- 13.3 If the course is shortened for other than all classes, the class flag(s) for the class(es) whose course is/are shortened will be flown along with code flag Sierra.

## **14 PENALTY SYSTEM**

- 14.1 RRS 44.1, as modified by RRS V1 and V2, applies.

## **15 TIME LIMITS**

- 15.1 If no boat in a class finishes a race within 2.5 hours of her class start, the race will be abandoned.

## **16 HEARING REQUESTS**

- 16.1 The protest time limit is 45 minutes after the race committee signal boat has docked.
- 16.2 Hearing request forms are available from the race office and on the Clubspot event page.
- 16.3 Online protests are encouraged and can be entered on the Clubspot event page.
- 16.4 Notices will be posted as soon as possible after a protest has been received to inform competitors of hearings in which they are parties or named as witnesses.
- 16.5 Hearings will be held at Barrington Yacht Club shortly after posting the notice of the hearing.
- 16.6 RRS 61.2(b)(2) and 63.7(b)(2) do not apply.

## **17 SCORING**

- 17.1 Race and series scoring shall be as described in the Notice of Race (NOR).

## **18 SAFETY REGULATIONS**

- 18.1 [NP] All boats shall comply with the US Sailing Nearshore Safety Equipment Requirements as stated in NOR 1(b).

## **19 BOAT AND EQUIPMENT CHECKS**

- 19.1 Boats or equipment may be inspected at any time for compliance with the class rules, notice of race and sailing instructions.

## **20 OFFICIAL VESSELS**

- 20.1 Official vessels will be identified as those flying "RC" flags, at least while the course is being set up.

## **21 TRASH DISPOSAL**

- 21.1 Trash shall be retained onboard for proper disposal ashore after racing.

## **22 AWARDS**

- 22.1 Awards will be given as described in the NOR.

## **23 RISK STATEMENTS**

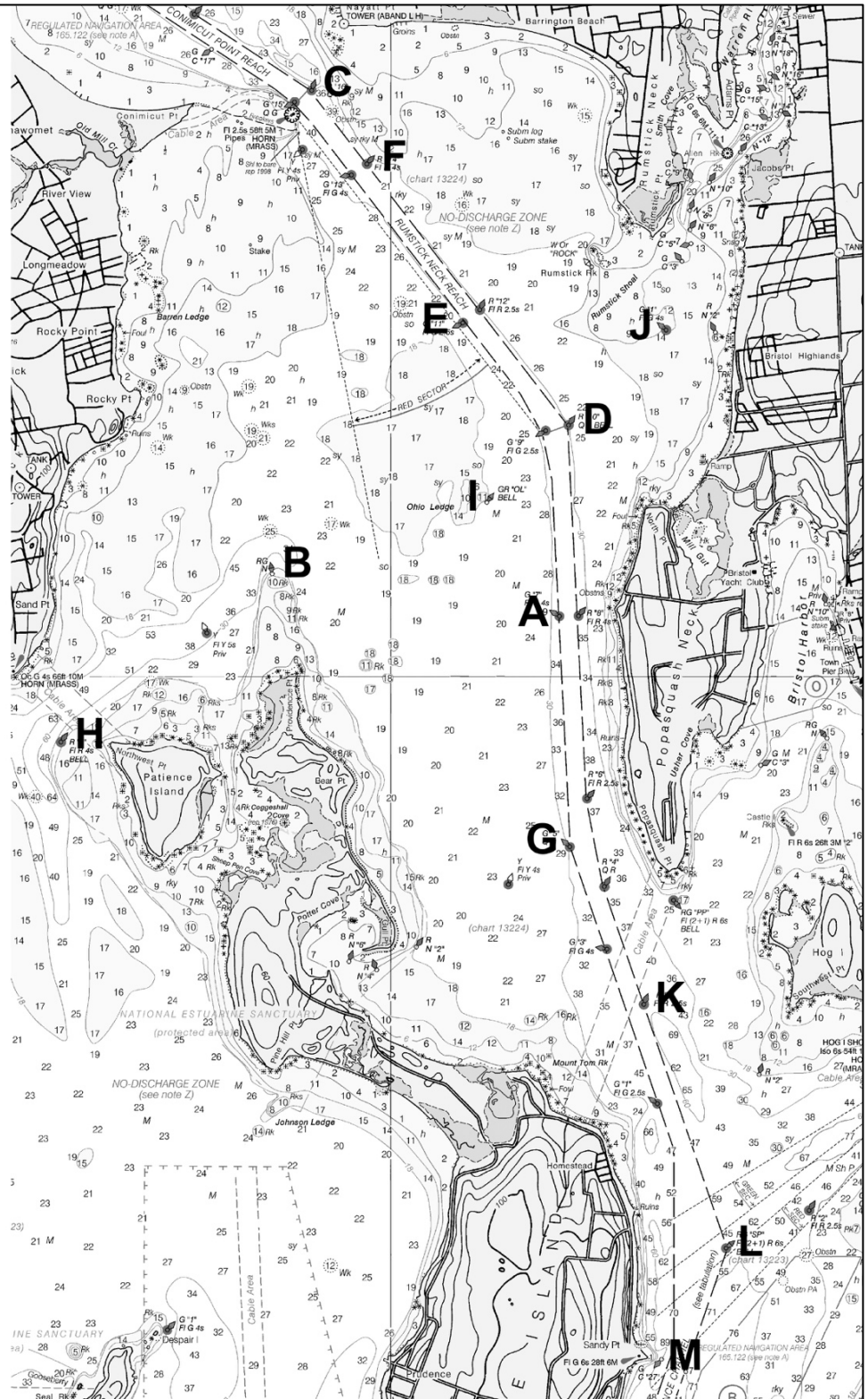
- 23.1 RRS 3 states: "The responsibility for a boat's decision to participate in a race or to continue to race is hers alone." By participating in this event each competitor agrees and acknowledges that sailing is a potentially dangerous activity with inherent risks. These risks include strong winds and rough seas, sudden changes in weather, failure of equipment, boat handling errors, poor seamanship by other boats, loss of balance on an unstable platform and fatigue resulting in increased risk of injury. Inherent in the sport of sailing is the risk of permanent, catastrophic injury or death by drowning, trauma, hypothermia or other causes.
- 23.2 The race area utilizes navigable waters shared by commercial traffic and other stakeholders.
- 23.3 Boats shall comply with the COLREGS when encountering commercial traffic and vessels restricted in their ability to maneuver.
- 23.4 A boat that interferes with commercial traffic or causes a commercial vessel to sound a danger signal (five or more short blasts) may be protested by the Race Committee.

# Barrington Yacht Club

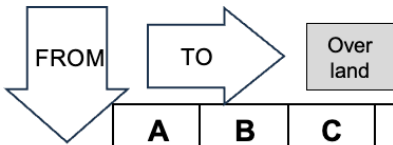
## Appendix A:

### Government Marks for use by Race Committee

- A** G "7" FIG 4s
- B** RG Nun  
Providence Point
- C** R "16" QR  
Nayatt Point
- D** R "10" QR BELL
- E** G "11" FIG 2.5s
- F** R "14" FIR 4s
- G** G "5" QG  
Poppasquash Point
- H** R "8" FIR 4s BELL  
Warwick Point
- I** GR "OL" BELL  
Ohio Ledge
- J** G "1" FIG 4s  
Rumstick Point
- K** R "2" FIR 2.5s
- L** RG "SP"  
FI (2+1) R 6s BELL
- M** G C "27"



## Government Marks: Ranges and Bearings



	A	B	C	D	E	F	G	H	I	J	K	L	M
A		294	350	020	358	352	192	270	346	034	182	179	186
		1.6	3.1	1.0	1.7	2.7	1.2	2.8	0.7	1.6	2.1	3.5	4.0
B	114		020	080	054	028	148	246	088	076	154	160	168
	1.6		2.6	1.8	1.7	2.3	2.2	1.4	1.2	2.5	3.1	4.4	4.7
C	170	200		156	162	156	176	214	172	139	174	174	179
	3.1	2.6		2.3	1.5	0.5	4.3	3.7	2.4	2.3	5.2	6.6	7.1
D	020	260	336		328	336	194	252	242	060	187	183	189
	1.0	1.8	2.3		0.8	1.8	2.3	3.2	0.6	0.7	3.2	4.5	5.0
E	178	234	342	148		348	182	236	188	106	179	178	183
	1.7	1.7	1.5	0.8		1.0	2.9	3.1	1.0	1.1	3.8	5.2	5.7
F	172	208	336	156	168		178	224	174	135	176	176	180
	2.7	2.3	0.5	1.8	1.0		3.8	3.5	1.9	1.8	4.8	6.1	6.6
G	012	328	256	014	002	358		296	000	025	169	173	184
	1.2	2.2	4.3	2.3	2.9	3.8		2.8	1.9	2.8	0.9	2.3	2.8
H	090	066	034	72	056	044	116		076	070	129	142	150
	2.8	1.4	3.7	3.2	3.1	3.5	2.8		2.6	3.9	3.5	4.5	4.7
I	166	268	352	062	008	354	180	256		062	177	176	183
	0.7	1.2	2.4	0.6	1.0	1.9	1.9	2.6		1.3	2.8	4.2	4.7
J	214	258	319	240	286	315	205	250	242		196	190	194
	1.6	2.5	2.3	0.7	1.1	1.8	2.8	3.9	1.3		3.6	4.9	5.5
K	002	334	354	007	359	356	349	309	357	016		175	191
	2.1	3.1	5.2	3.2	3.8	4.8	0.9	3.5	2.8	3.6		1.4	1.9
L	359	340	354	003	358	356	354	322	356	010	355		224
	3.5	4.4	6.6	4.5	5.2	6.1	2.3	4.5	4.2	4.9	1.4		0.7
M	006	348	359	009	003	000	004	330	003	014	011	044	
	4.0	4.7	7.1	5.0	5.7	6.6	2.8	4.7	4.7	5.5	1.9	0.7	

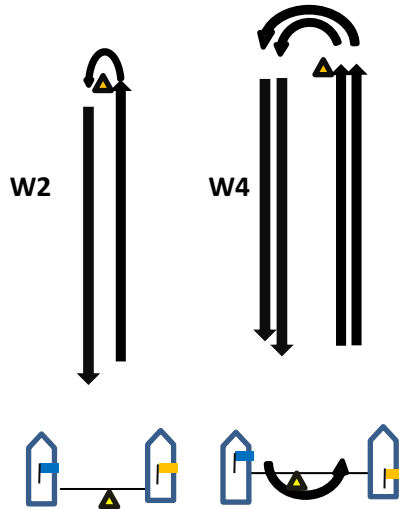
2025 Barrington Yacht Club Cox Memorial Series

Appendix B: Course Diagrams for courses with dropped marks

*If Government Marks are used (Appendix A), the turning mark will be a Government Mark. The Race Committee may use an inflatable mark for the start/finish mark.*

**Windward Leeward**

Even number of legs



Odd number of legs

